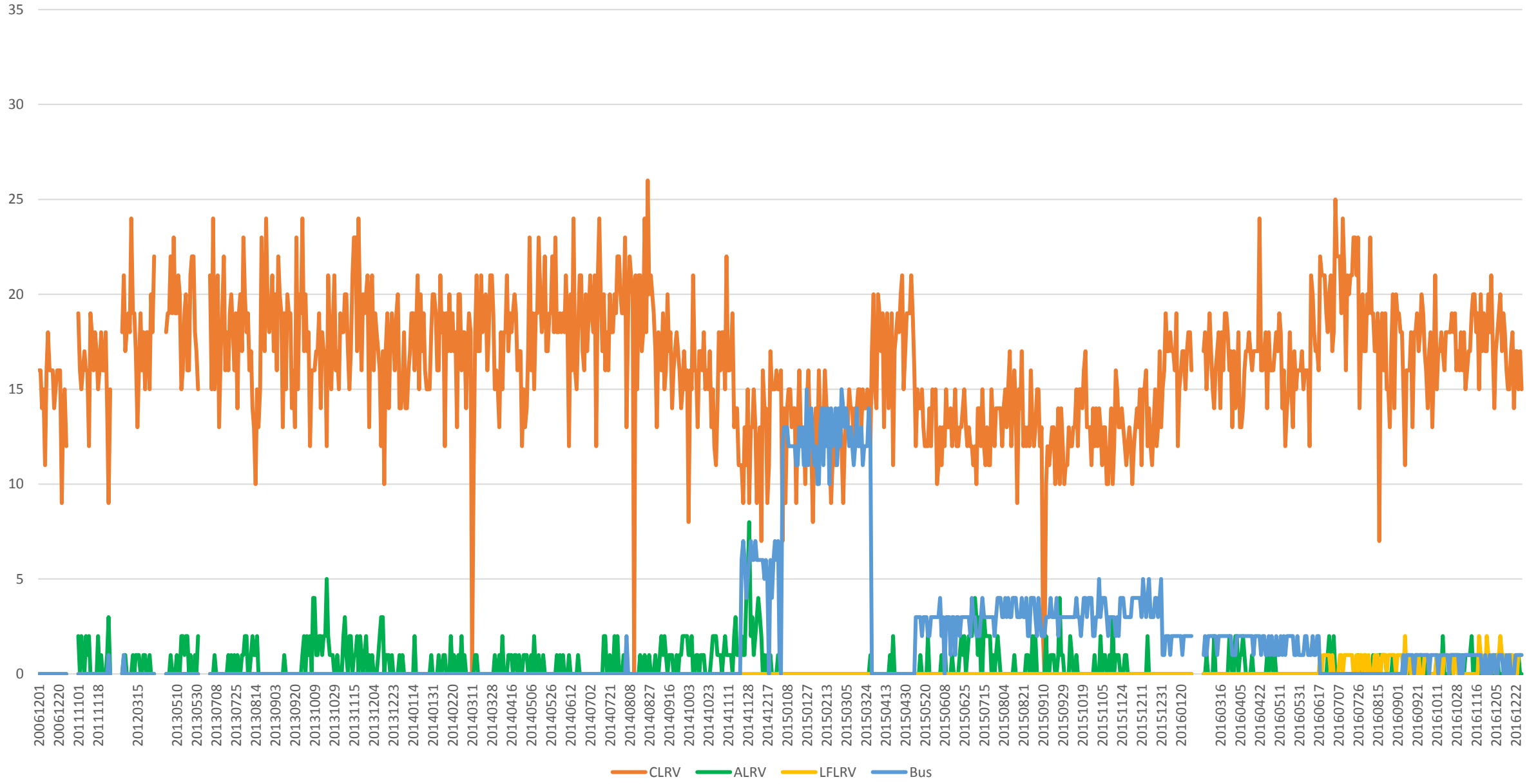
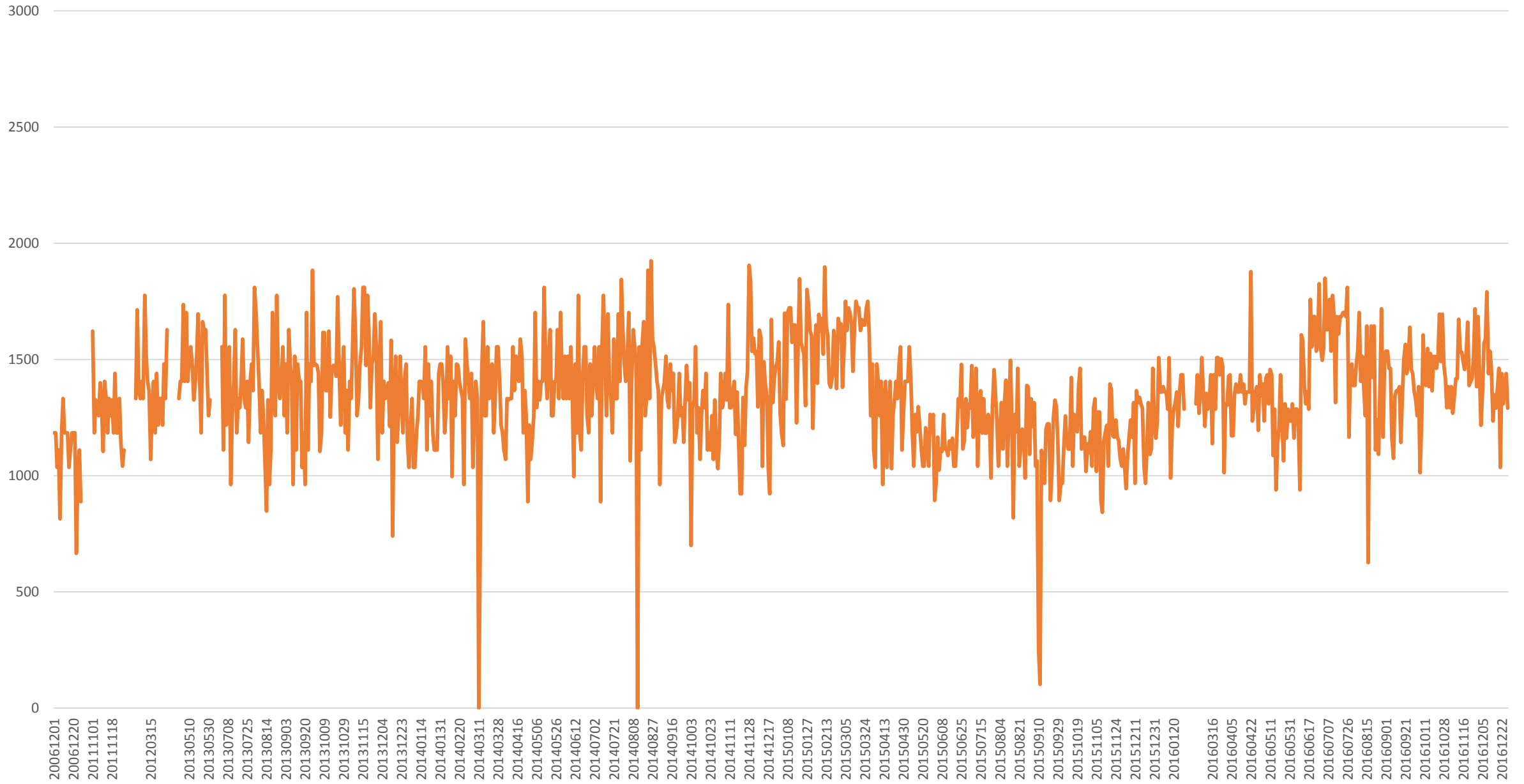


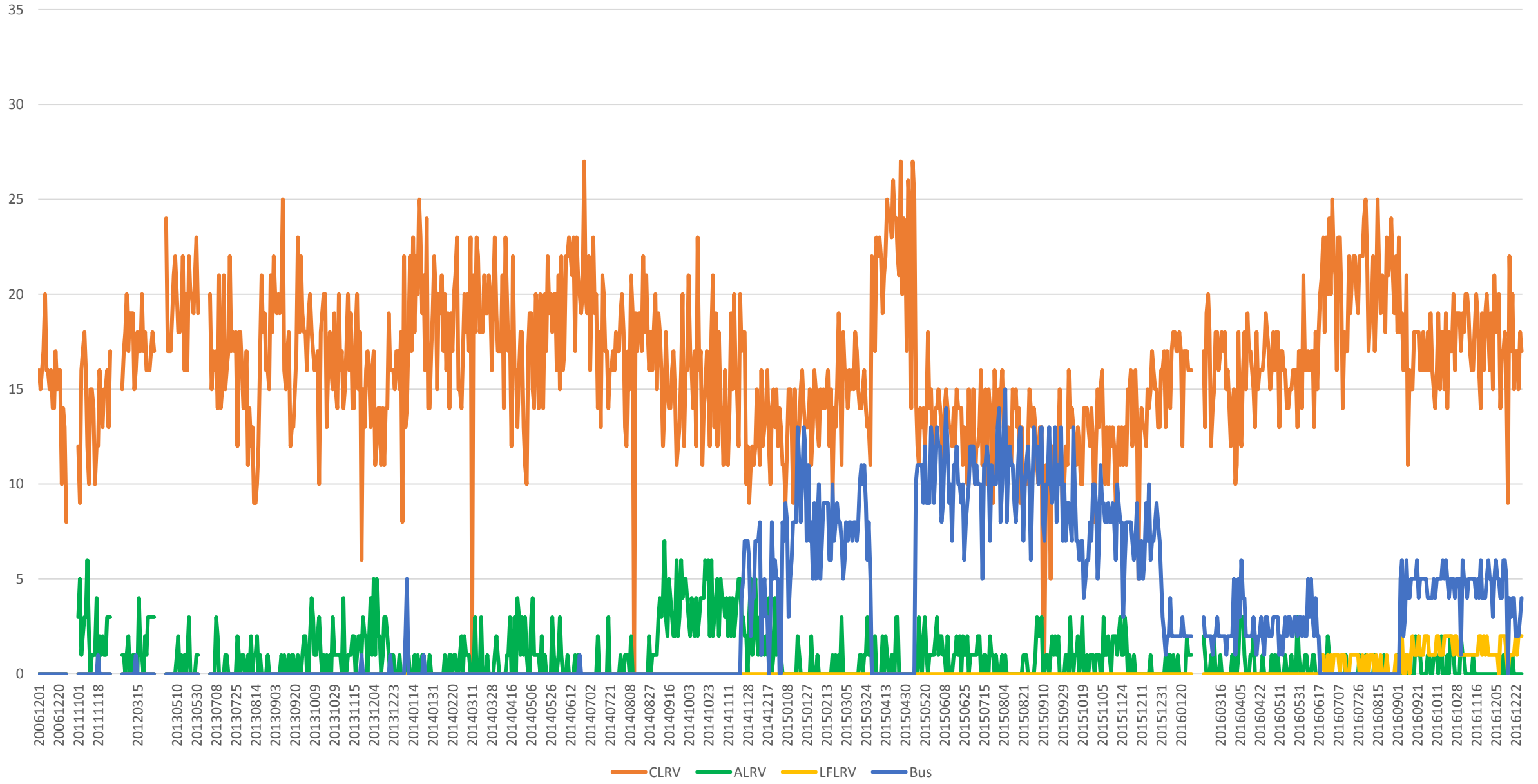
504 King Vehicle Counts at Yonge/WB 1500 to 1600



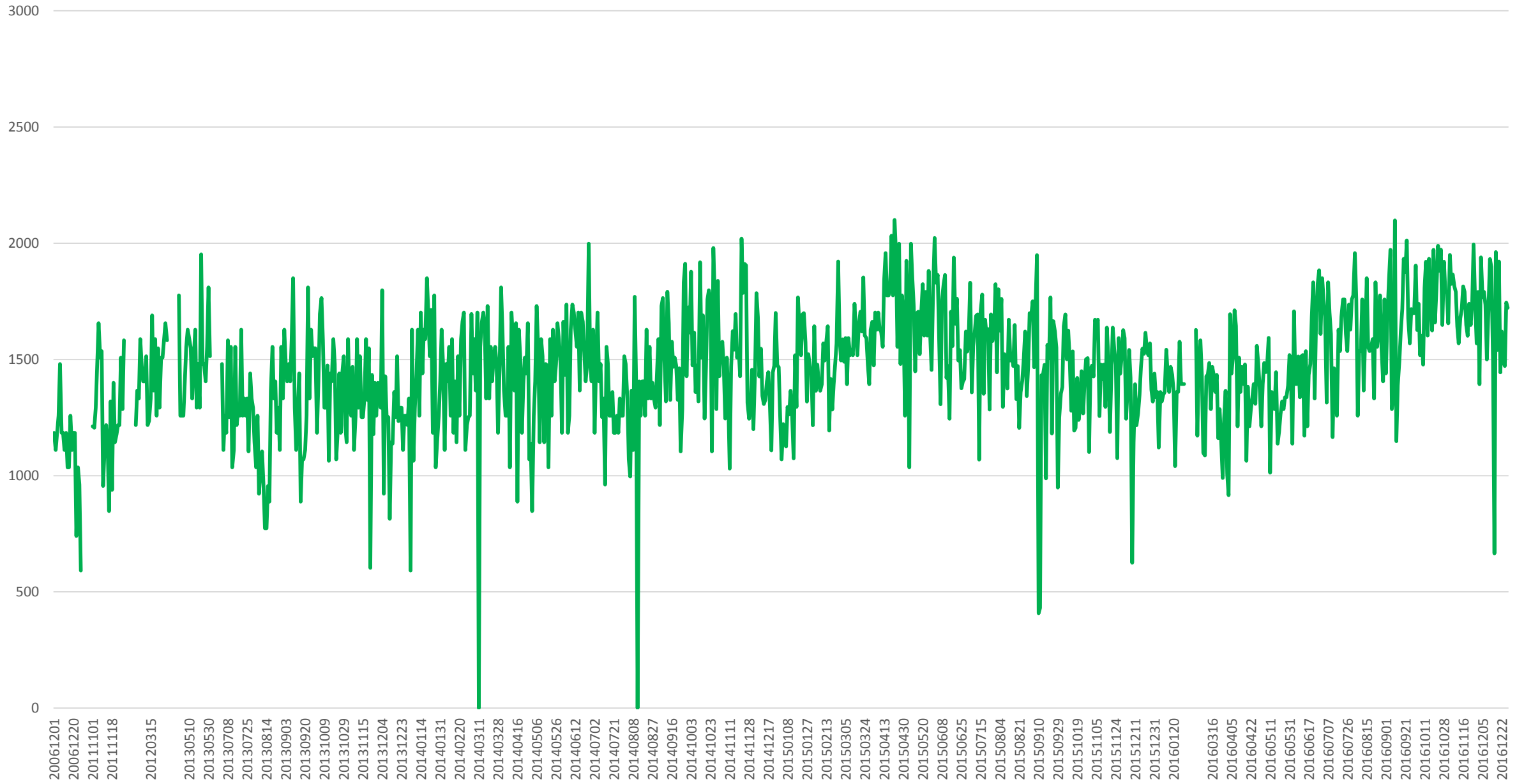
504 King Capacity at Yonge/WB 1500 to 1600



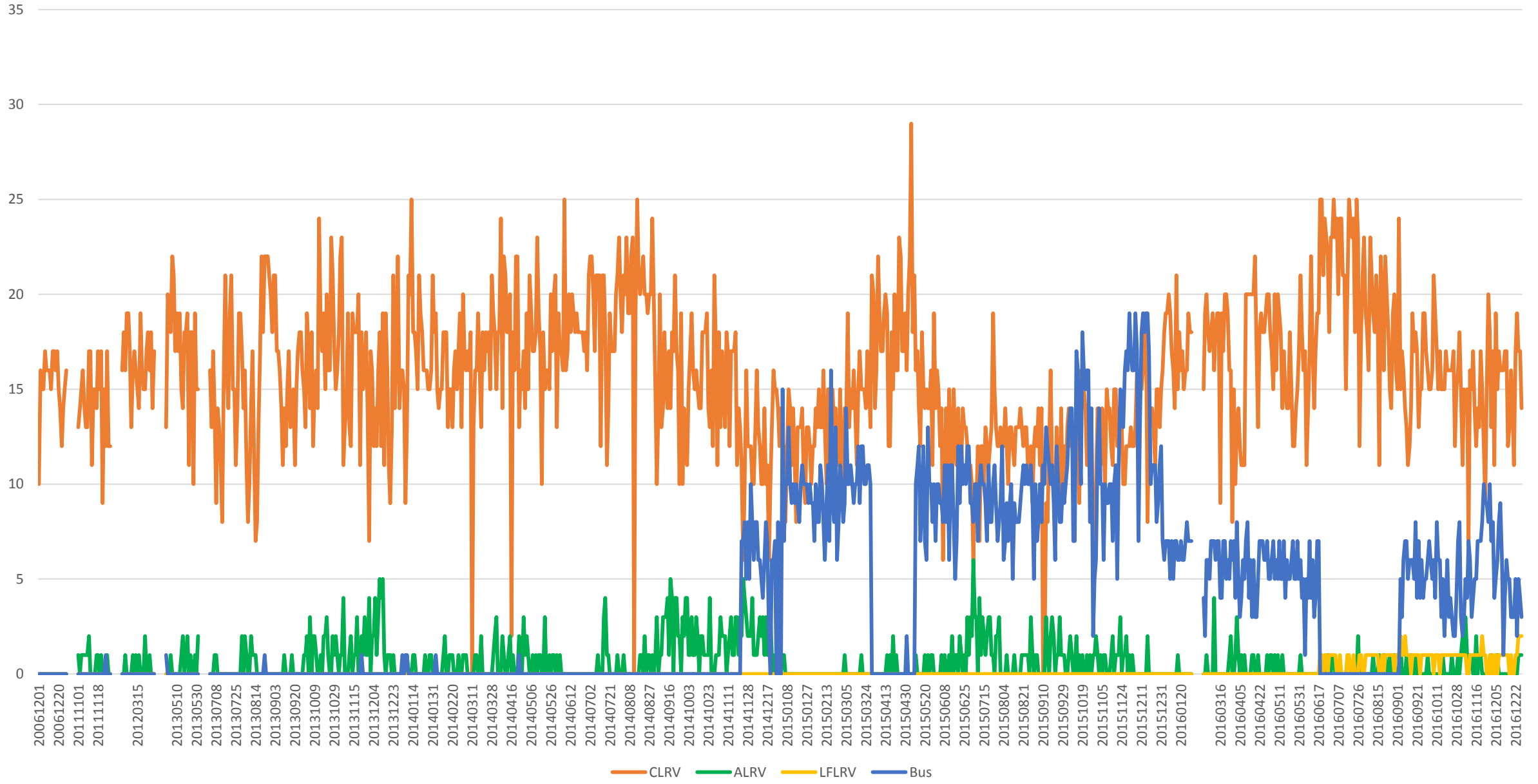
504 King Vehicle Counts at Yonge/WB 1600 to 1700



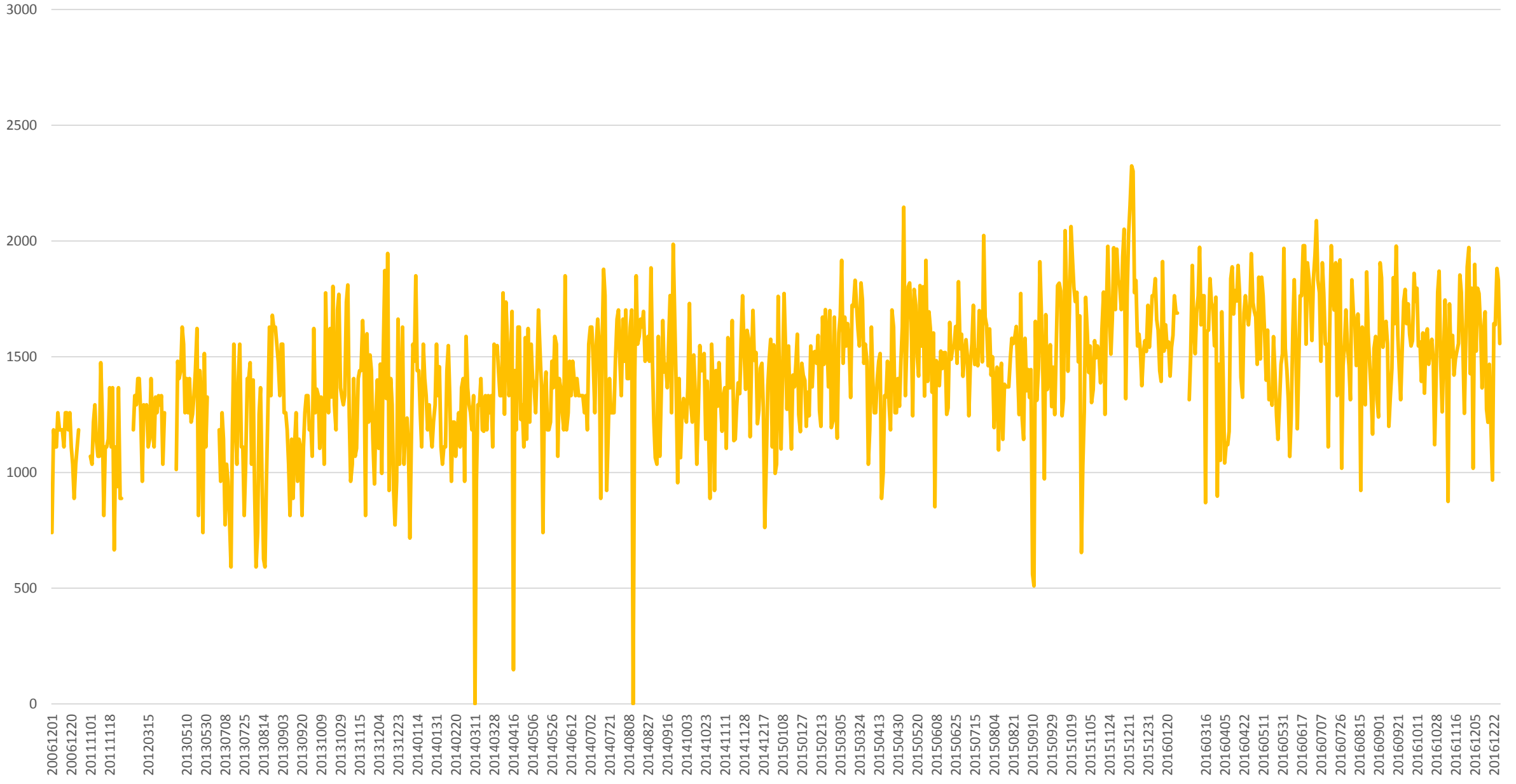
504 King Capacity at Yonge/WB 1600 to 1700



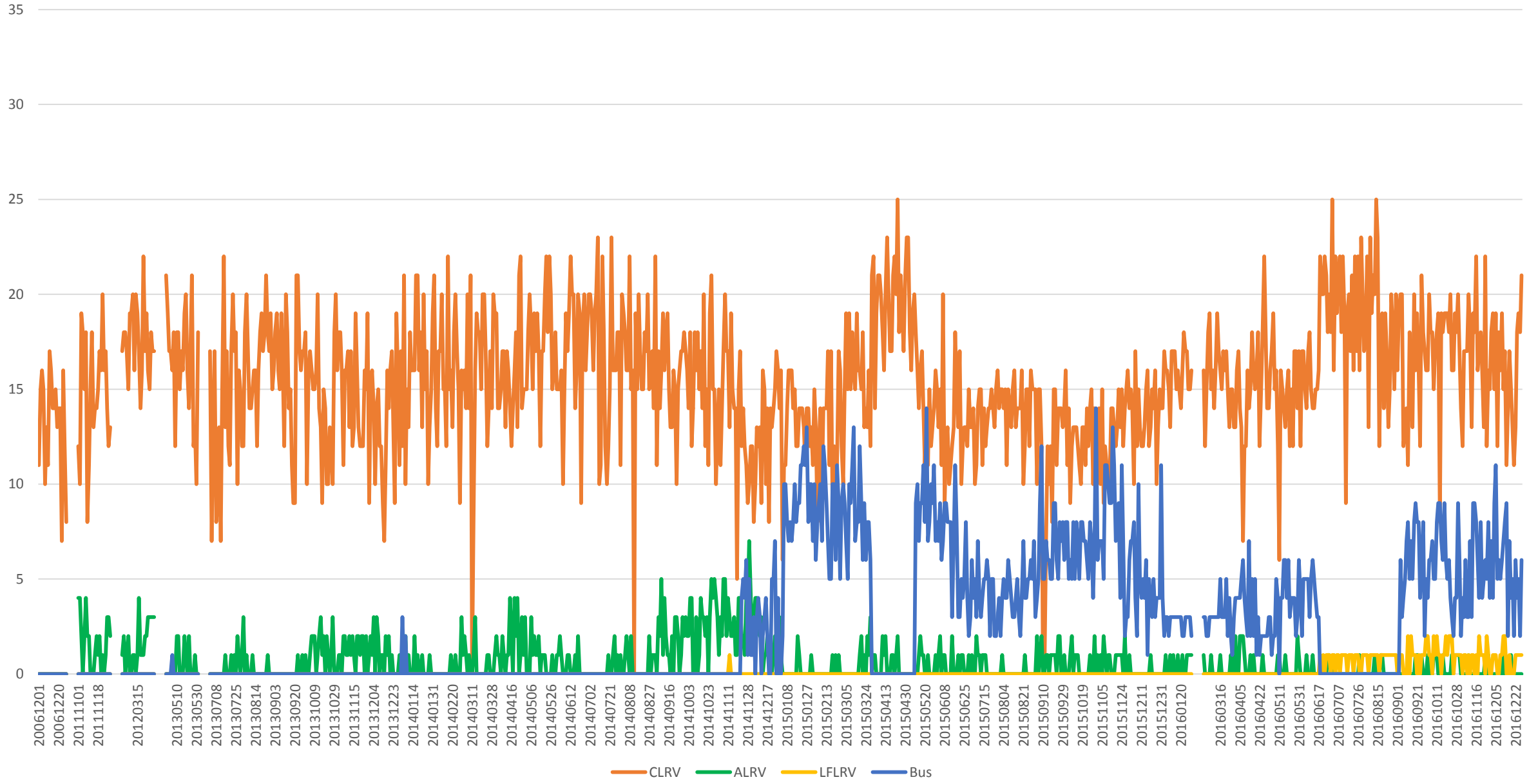
504 King Vehicle Counts at Yonge/WB 1700 to 1800



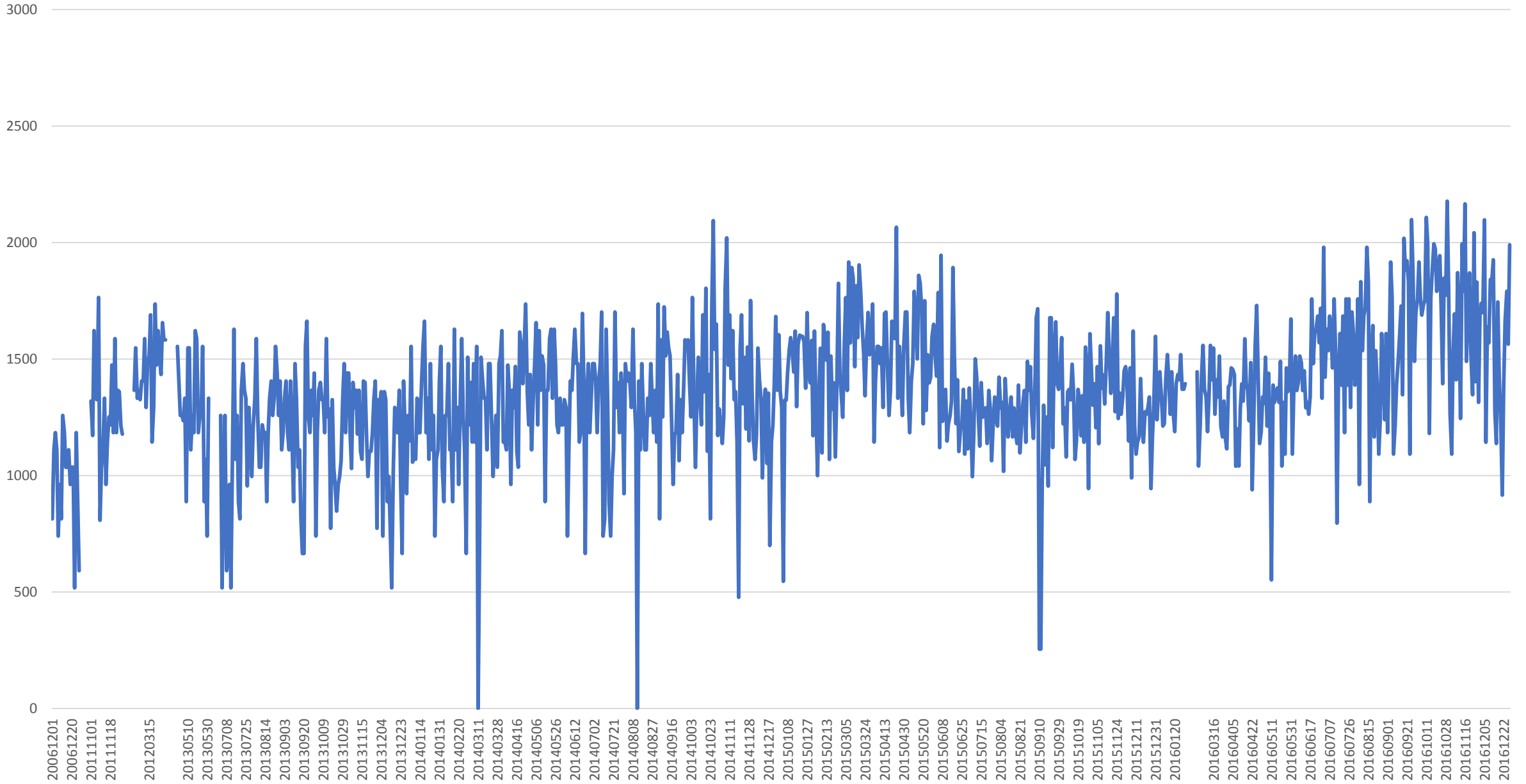
504 King Capacity at Yonge/WB 1700 to 1800



504 King Vehicle Counts at Yonge/WB 1800 to 1900



504 King Capacity at Yonge/WB 1800 to 1900





504 King Total Capacity at Yonge/WB from 1500 to 1900

