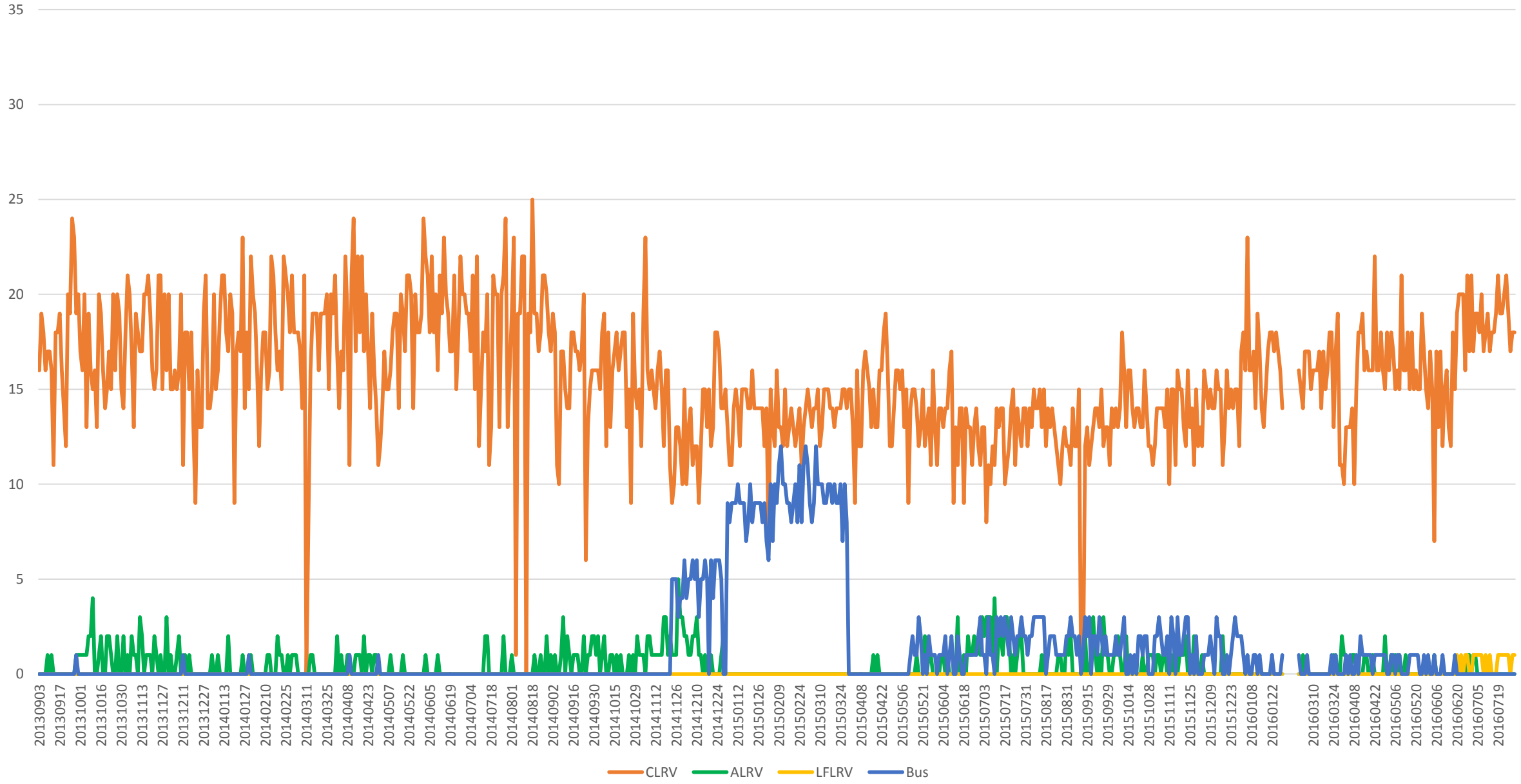
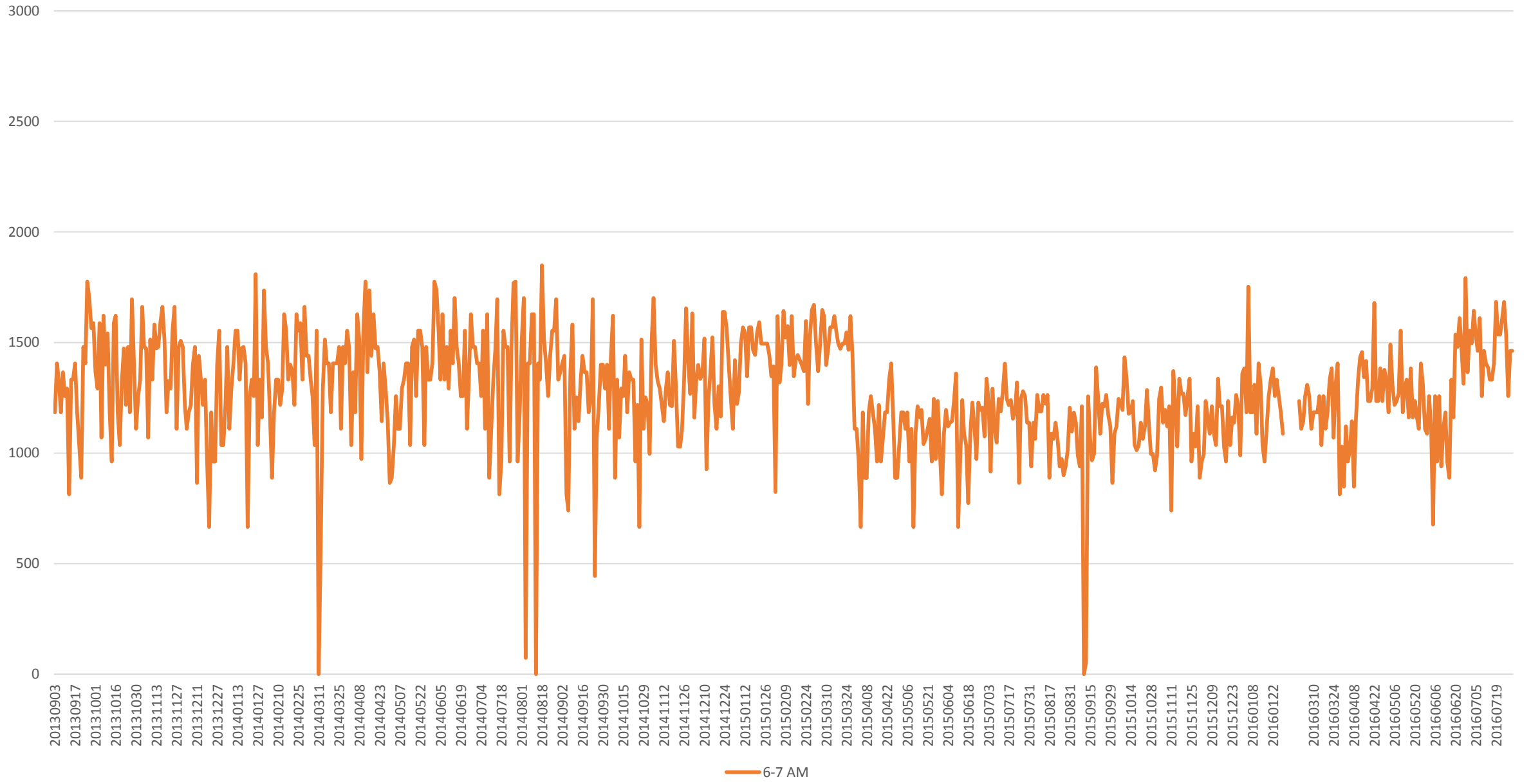


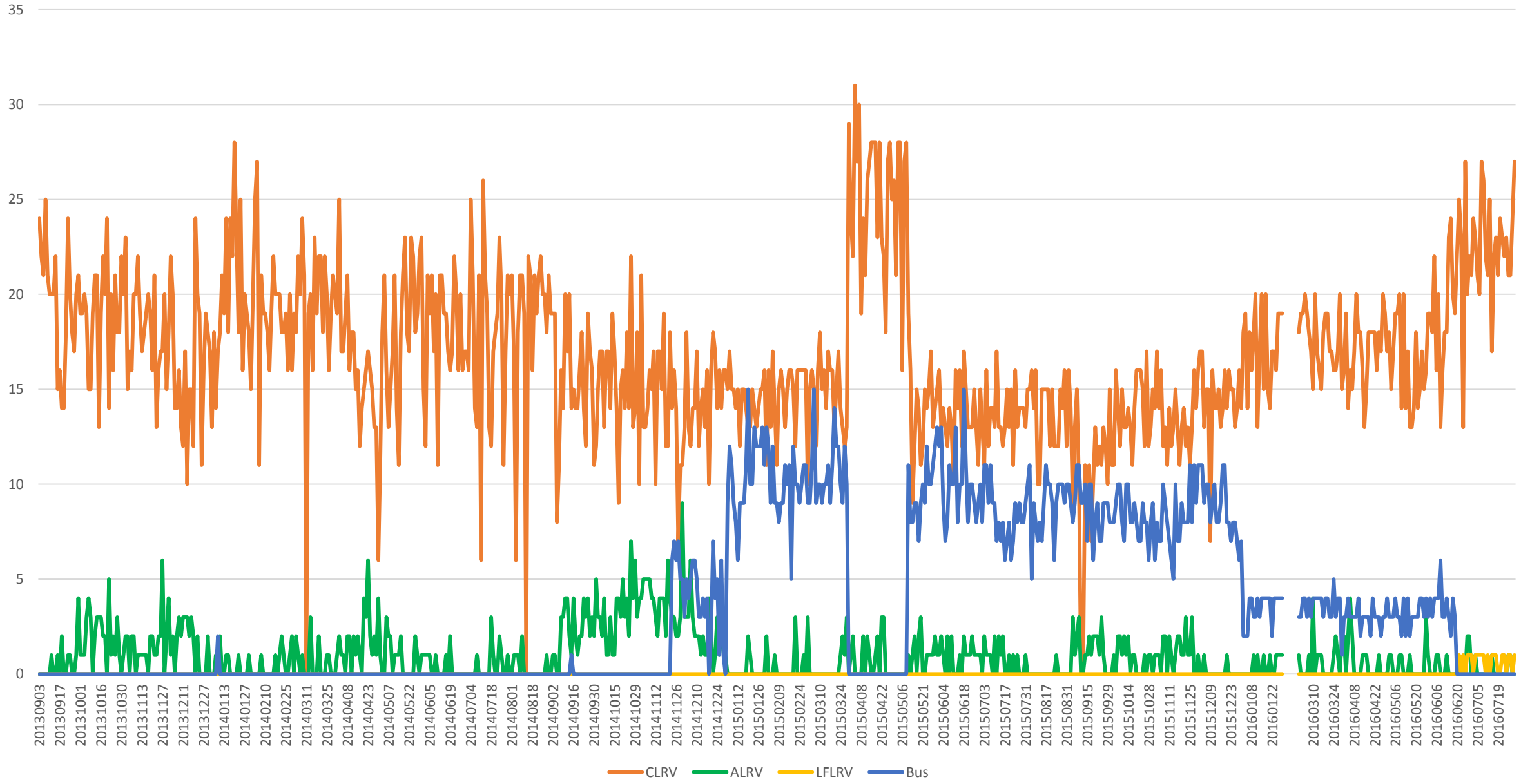
504 King Vehicle Counts at Bathurst/WB 1500 to 1600



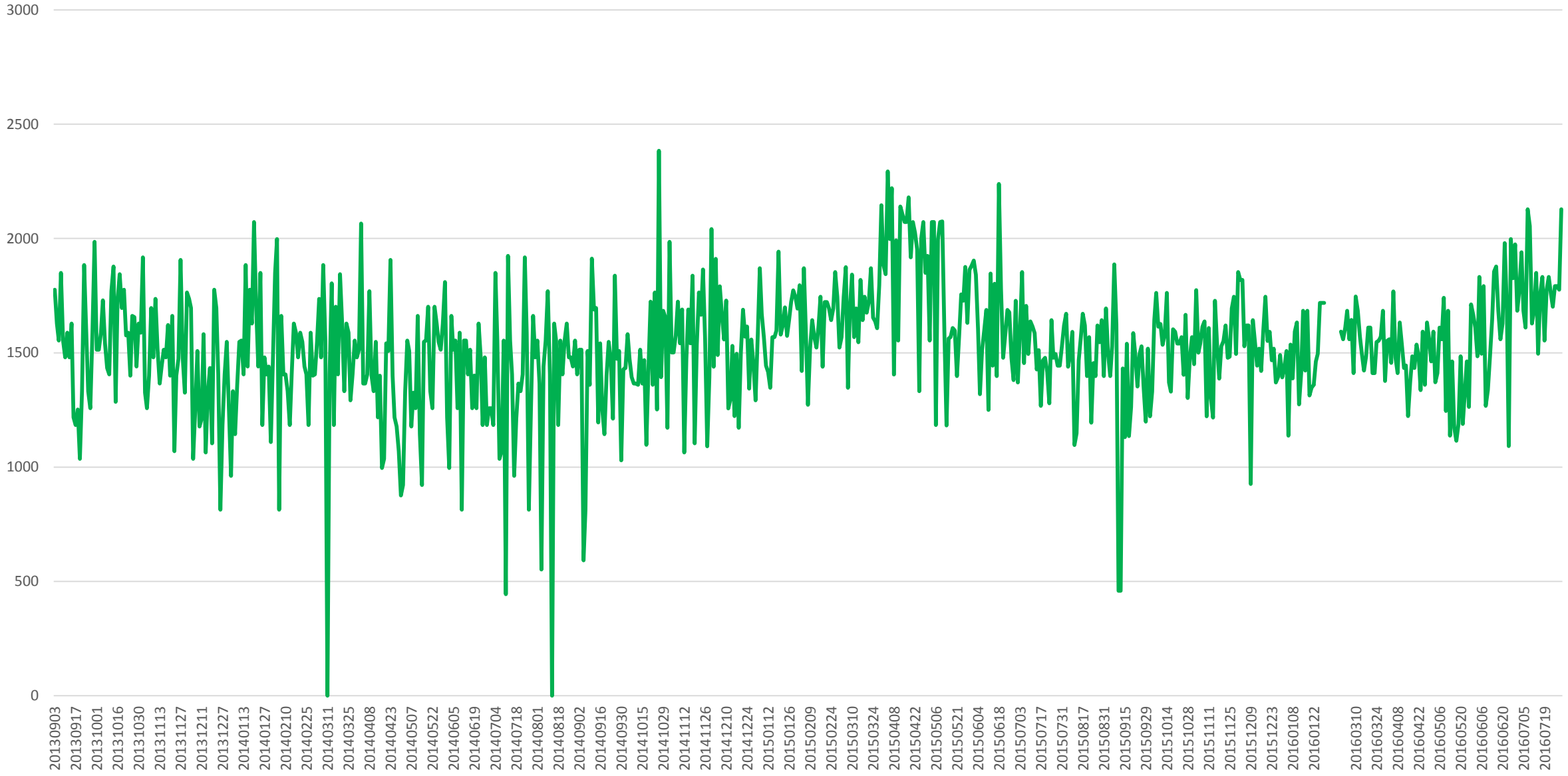
504 King Capacity at Bathurst/WB 1500 to 1600



504 King Vehicle Counts at Bathurst/WB 1600 to 1700

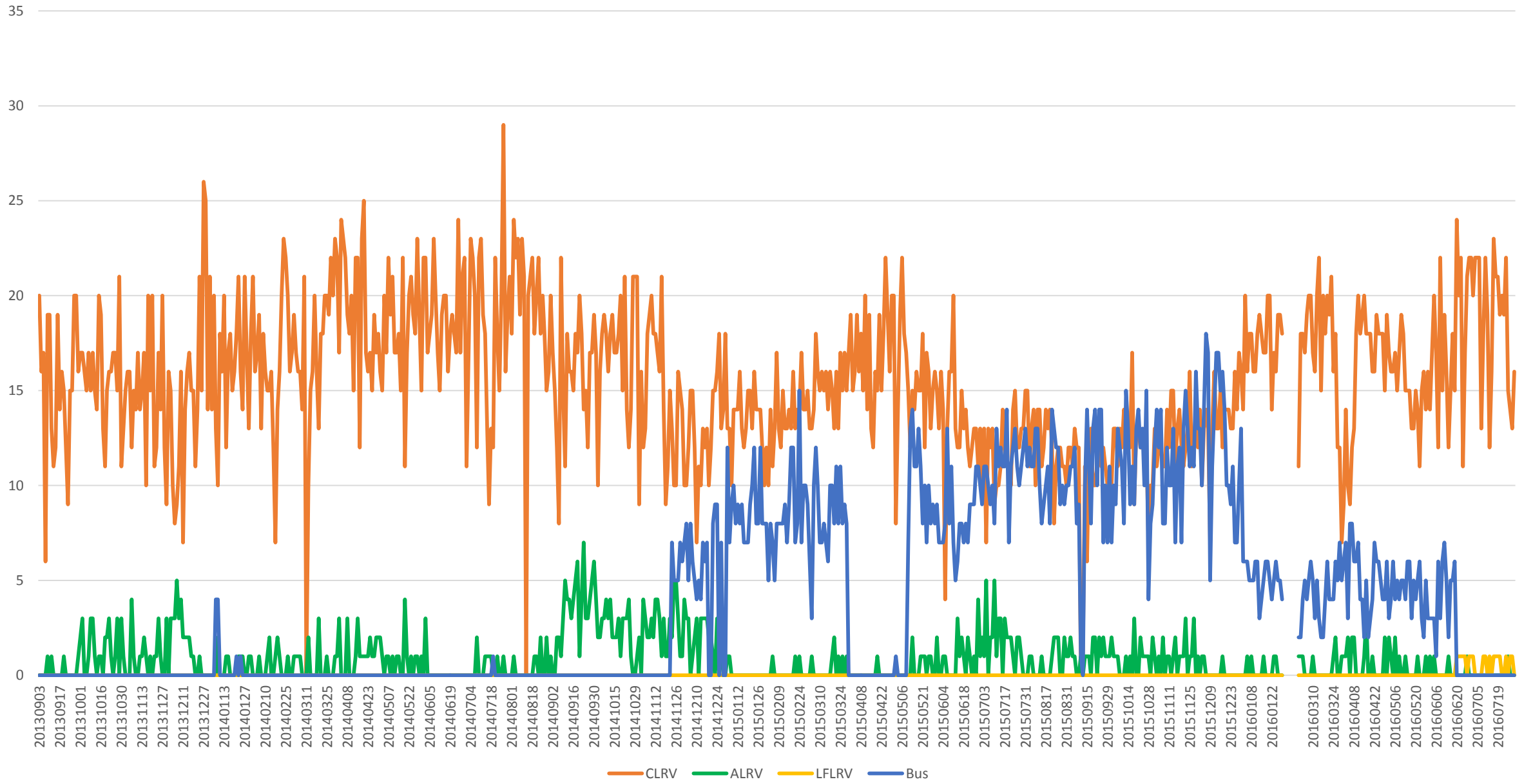


504 King Capacity at Bathurst/WB 1600 to 1700

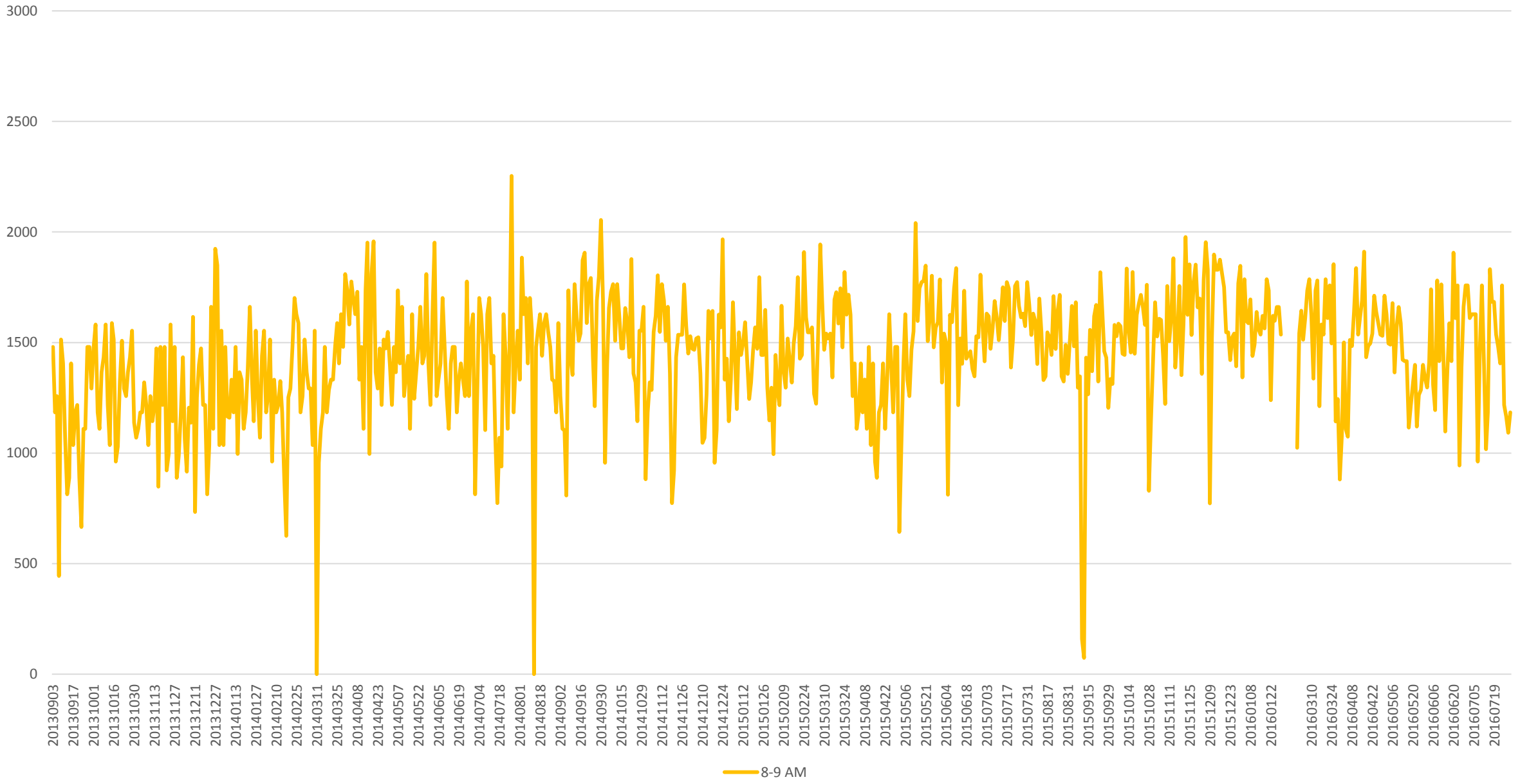


7-8 AM

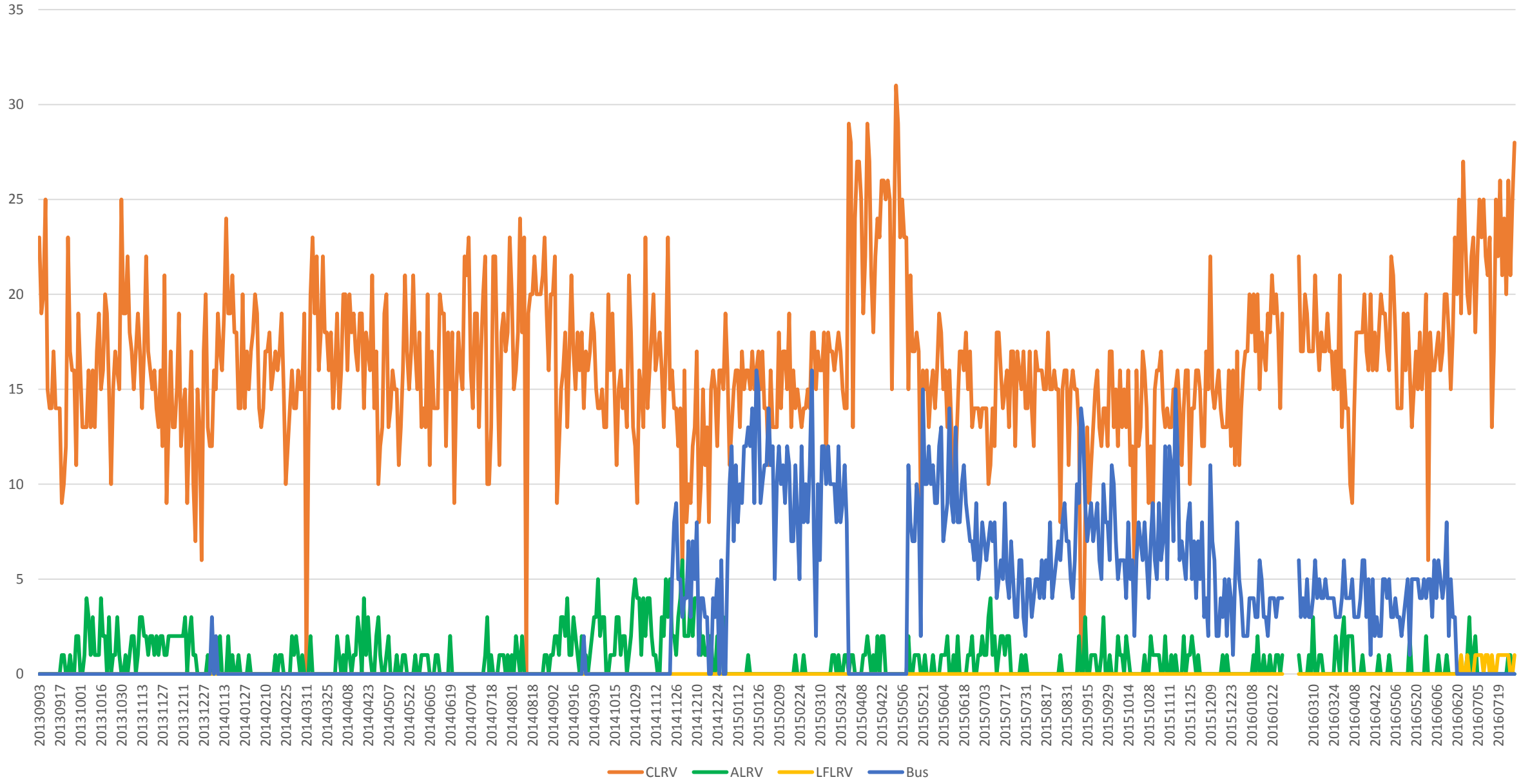
504 King Vehicle Counts at Bathurst/WB 1700 to 1800



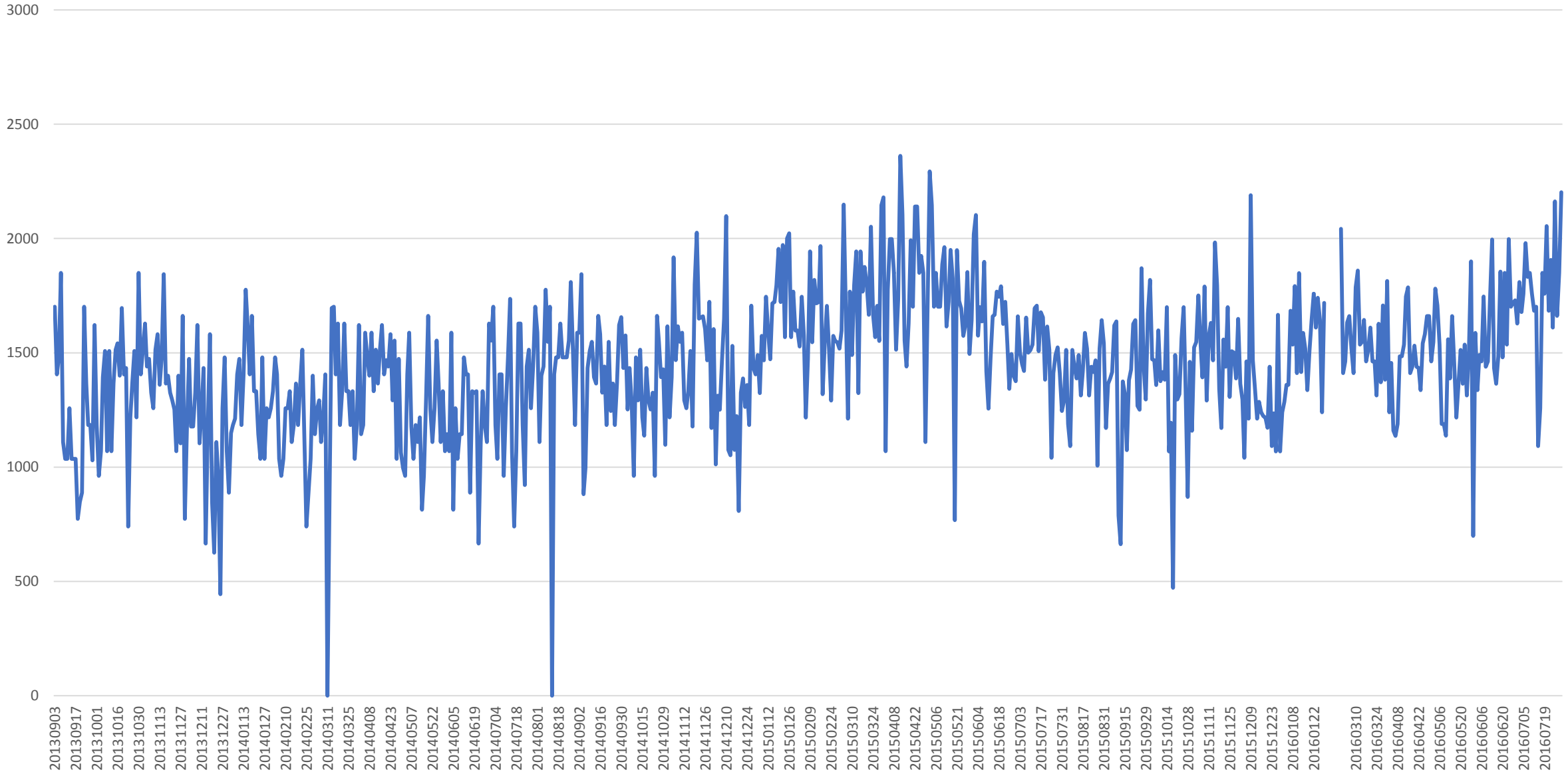
504 King Capacity at Bathurst/WB 1700 to 1800



504 King Vehicle Counts at Bathurst/WB 1800 to 1900



504 King Capacity at Bathurst/WB 1800 to 1900



9-10 AM



504 King Total Capacity at Bathurst/WB from 1500 to 1900

