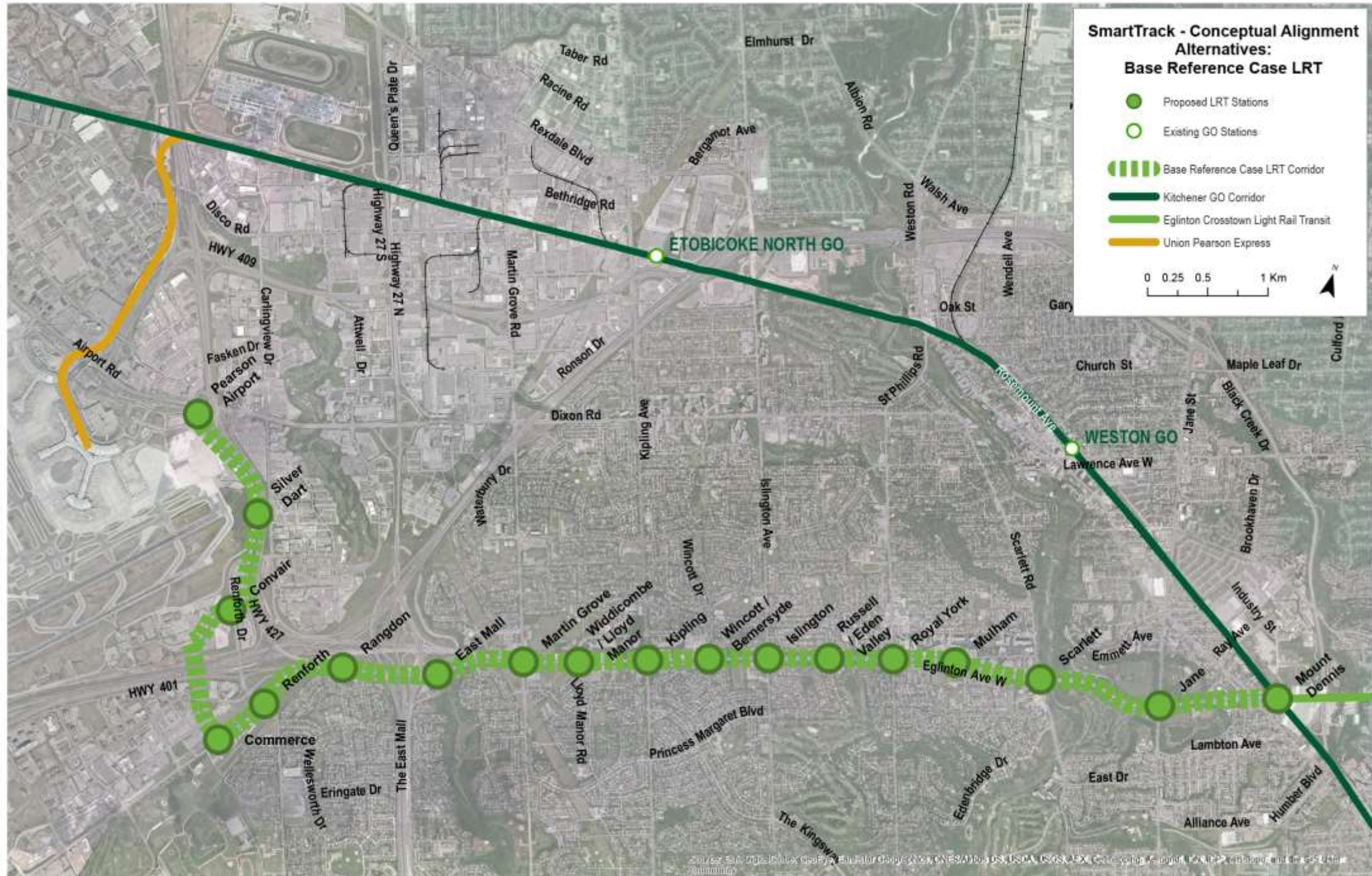


# SmartTrack Alignment Options

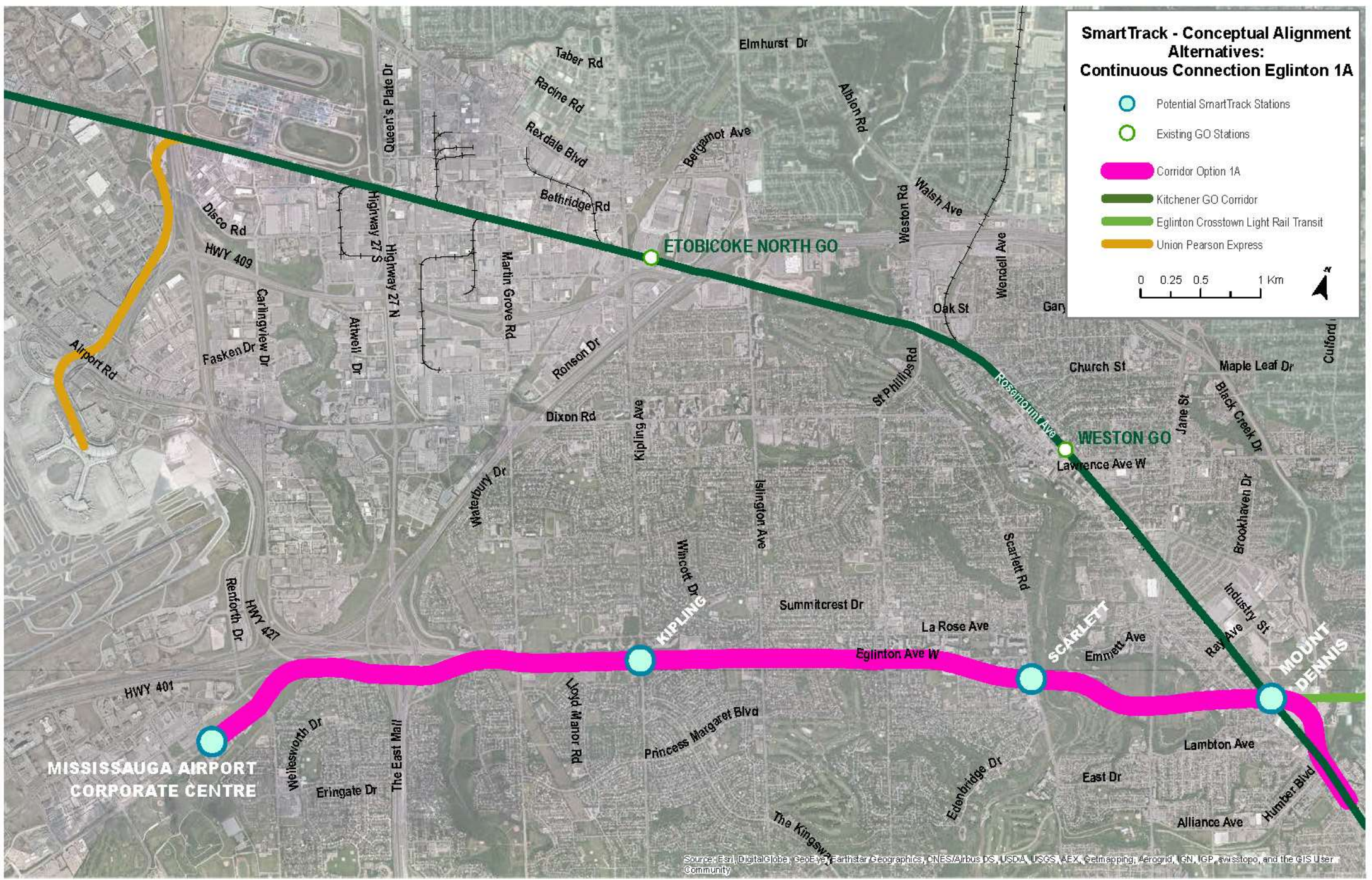
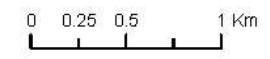
June 2015



Source: Esri, DigitalGlobe, GeoEye, Earthstar Geographics, CNR/Airphoto, USDA/GSA, AeroGRID, IGN, GEBCO, Swire, and the GIS User Community

**SmartTrack - Conceptual Alignment Alternatives:  
Continuous Connection Eglinton 1A**

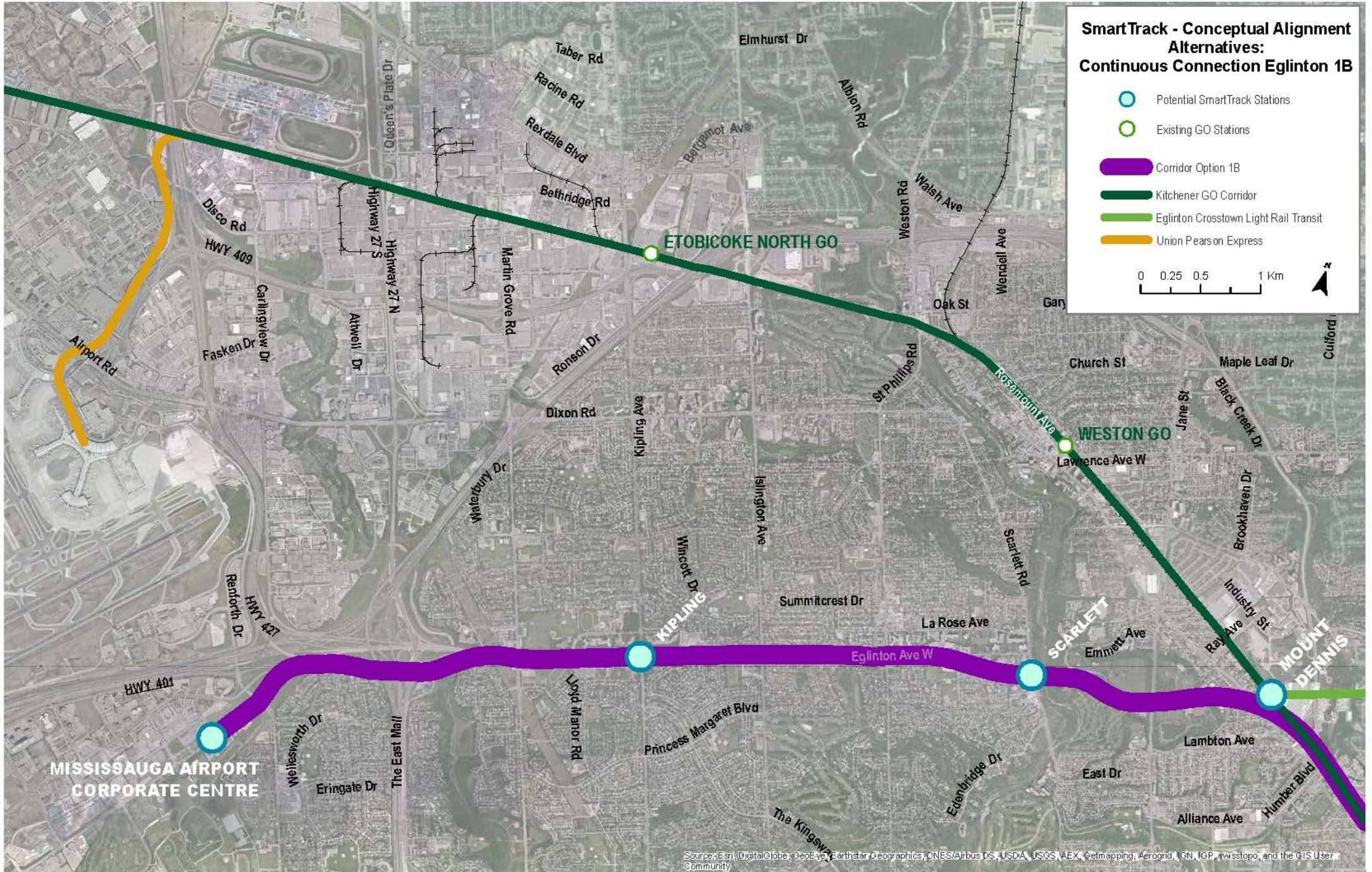
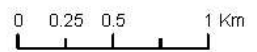
-  Potential SmartTrack Stations
-  Existing GO Stations
-  Corridor Option 1A
-  Kitchener GO Corridor
-  Eglinton Crosstown Light Rail Transit
-  Union Pearson Express



Source: Esri, DigitalGlobe, GeoEye, Earthstar Geographics, CNES/Airbus DS, USDA, USGS, AEX, Getmapping, Aerogrid, IGN, IGP, swisstopo, and the GIS User Community

**SmartTrack - Conceptual Alignment Alternatives:  
Continuous Connection Eglinton 1B**

-  Potential SmartTrack Stations
-  Existing GO Stations
-  Corridor Option 1B
-  Kitchener GO Corridor
-  Eglinton Crosstown Light Rail Transit
-  Union Pearson Express



Source: Esri, DigitalGlobe, GeoEye, Earthstar Geographics, CNES/Airbus DS, USDA, USGS, AEX, Getmapping, Aerogrid, IGN, IGP, swisstopo, and the GIS User Community

**SmartTrack - Conceptual Alignment Alternatives:  
Continuous Connection Eglinton 1C**

● Potential SmartTrack Stations

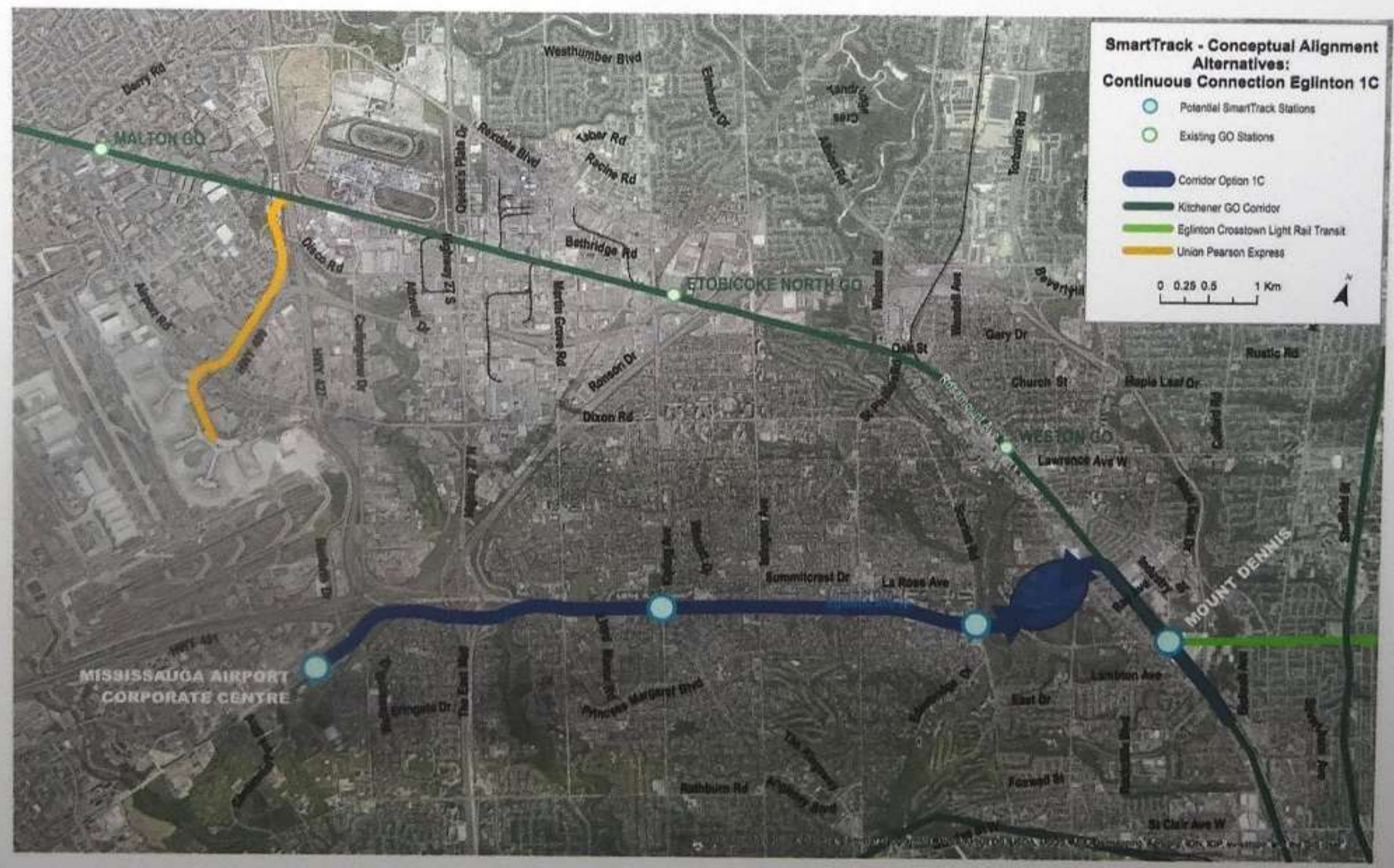
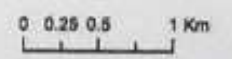
○ Existing GO Stations

■ Corridor Option 1C

■ Kitchener GO Corridor

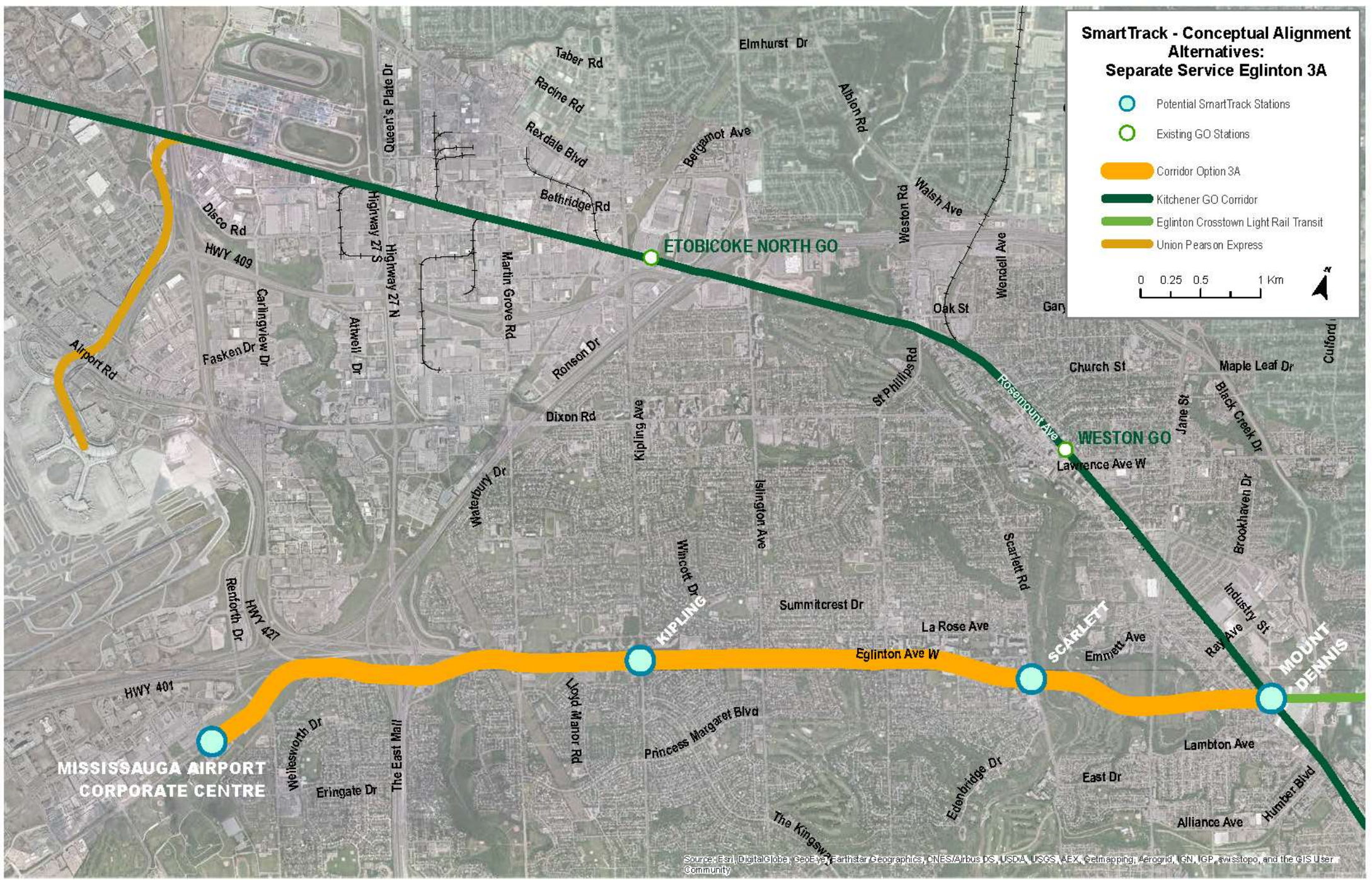
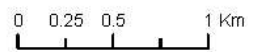
■ Eglinton Crosstown Light Rail Transit

■ Union Pearson Express



**SmartTrack - Conceptual Alignment  
Alternatives:  
Separate Service Eglinton 3A**

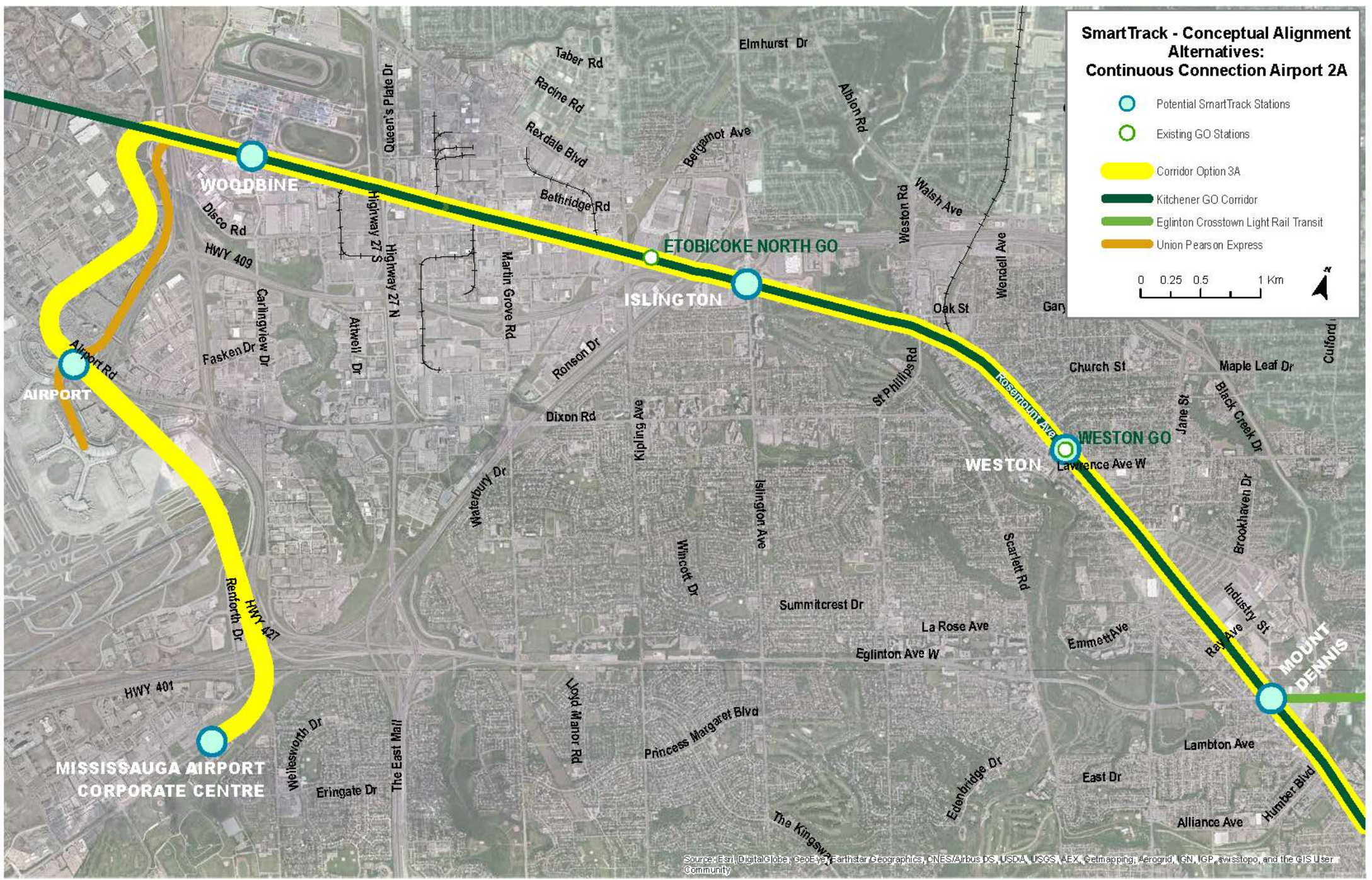
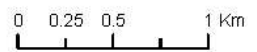
-  Potential SmartTrack Stations
-  Existing GO Stations
-  Corridor Option 3A
-  Kitchener GO Corridor
-  Eglinton Crosstown Light Rail Transit
-  Union Pearson Express



Source: Esri, DigitalGlobe, GeoEye, Earthstar Geographics, CNES/Airbus DS, USDA, USGS, AEX, Getmapping, Aerogrid, IGN, IGP, swisstopo, and the GIS User Community

**SmartTrack - Conceptual Alignment Alternatives:  
Continuous Connection Airport 2A**

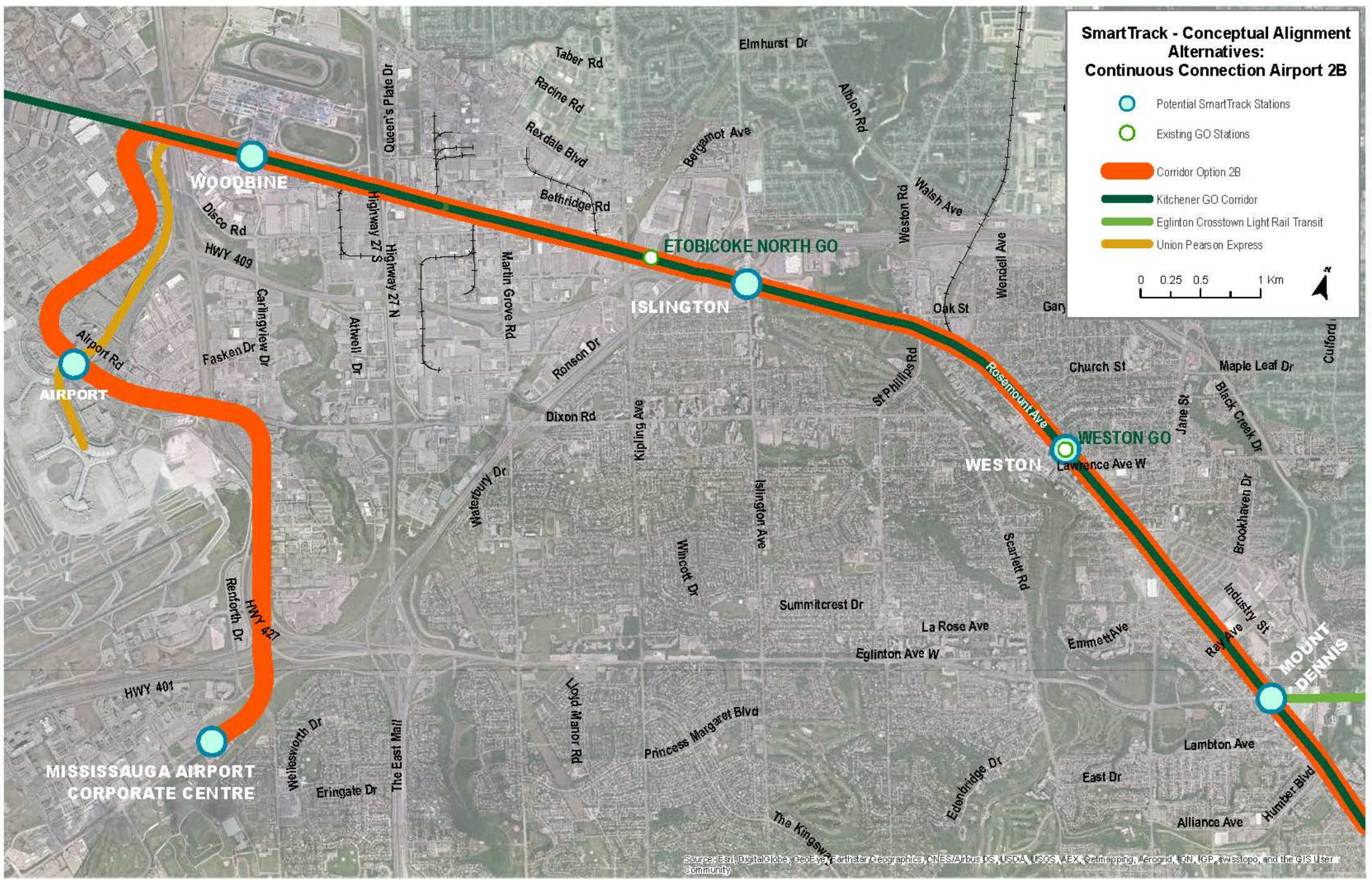
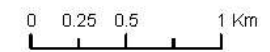
-  Potential SmartTrack Stations
-  Existing GO Stations
-  Corridor Option 3A
-  Kitchener GO Corridor
-  Eglinton Crosstown Light Rail Transit
-  Union Pearson Express



Source: Esri, DigitalGlobe, GeoEye, Earthstar Geographics, CNES/Airbus DS, USDA, USGS, AEX, Geomapping, AeroGRID, IGN, IGP, swisstopo, and the GIS User Community

**SmartTrack - Conceptual Alignment Alternatives:  
Continuous Connection Airport 2B**

-  Potential SmartTrack Stations
-  Existing GO Stations
-  Corridor Option 2B
-  Kitchener GO Corridor
-  Eglinton Crosstown Light Rail Transit
-  Union Pearson Express

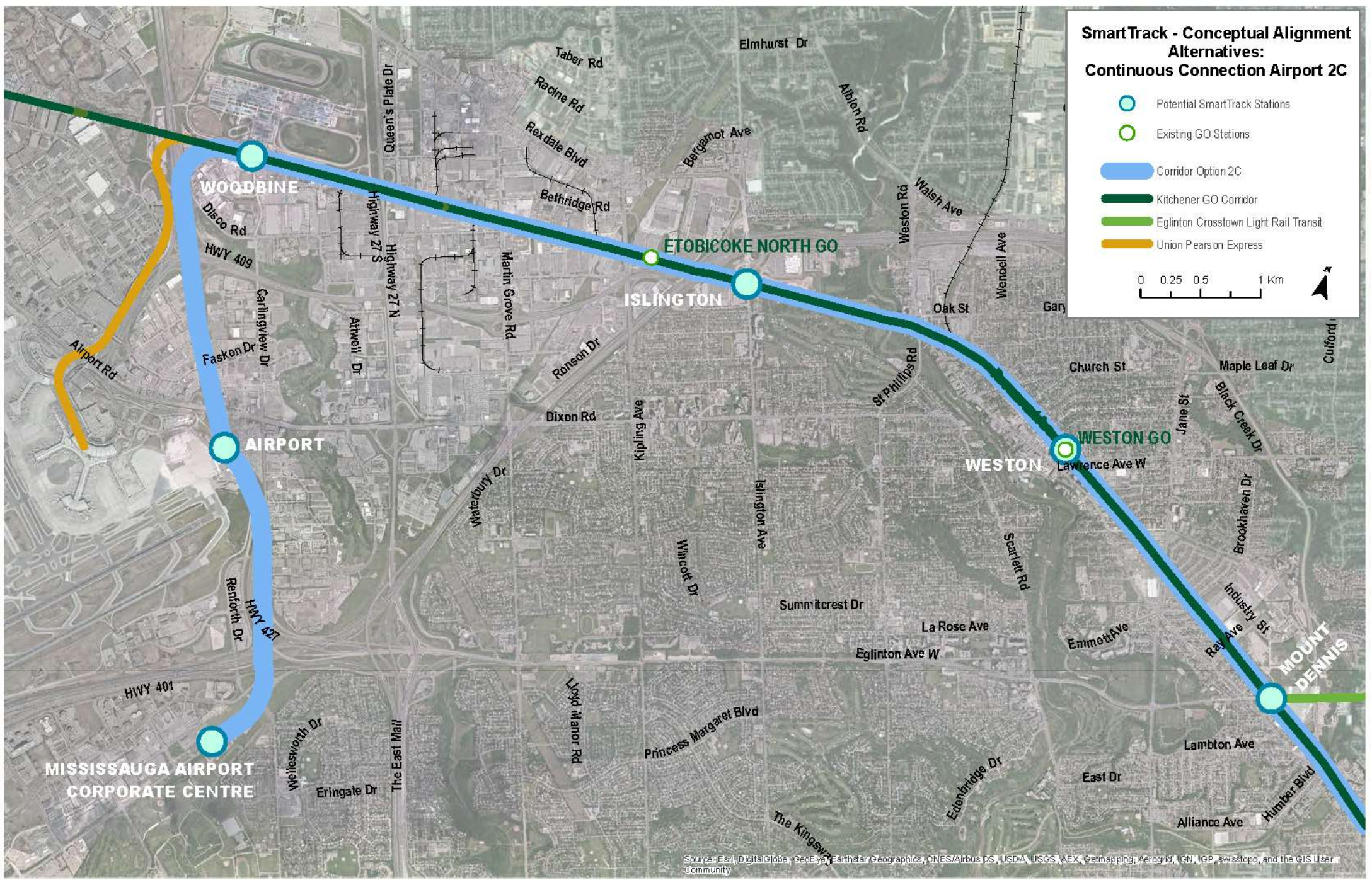


Source: Esri, DigitalGlobe, GeoEye, Earthstar Geographics, CNES/Airbus DS, USDA, USGS, AEX, Geomapping, AeroGRID, IGN, IGP, swisstopo, and the GIS User Community



**SmartTrack - Conceptual Alignment Alternatives:  
Continuous Connection Airport 2C**

-  Potential SmartTrack Stations
-  Existing GO Stations
-  Corridor Option 2C
-  Kitchener GO Corridor
-  Eglinton Crosstown Light Rail Transit
-  Union Pearson Express



Source: Esri, DigitalGlobe, GeoEye, Earthstar Geographics, CNES/Airbus DS, USDA, USGS, AEX, Geomapping, AeroGRID, IGN, IGP, swisstopo, and the GIS User Community