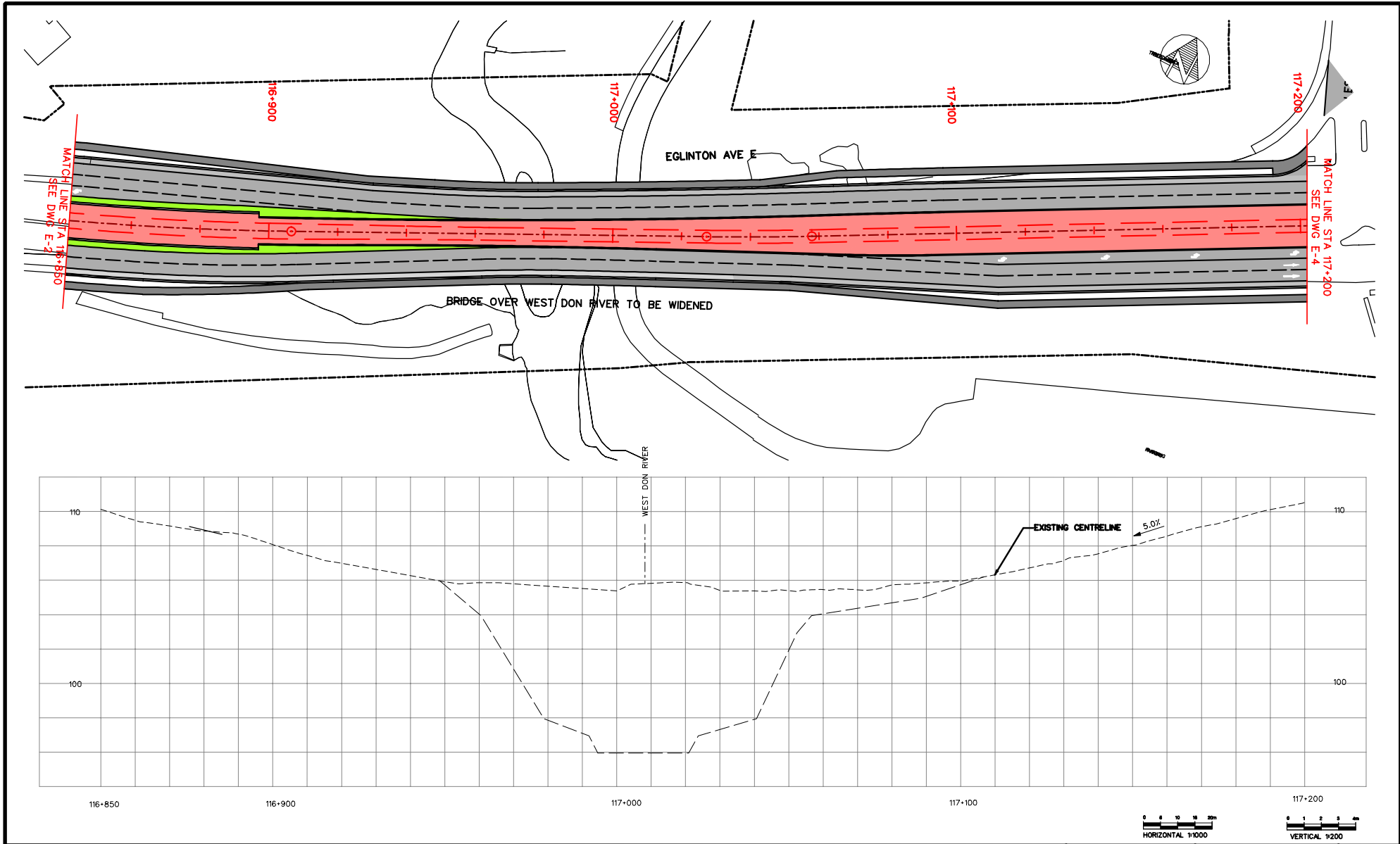


EGLINTON CROSSTOWN LRT - ENVIRONMENTAL PROJECT REPORT

EAST SURFACE SECTION  
 PLAN AND PROFILE STA 116+500 TO STA 116+850

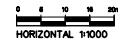


Dep. No.  
 E2R  
 Sheet No.  
 68

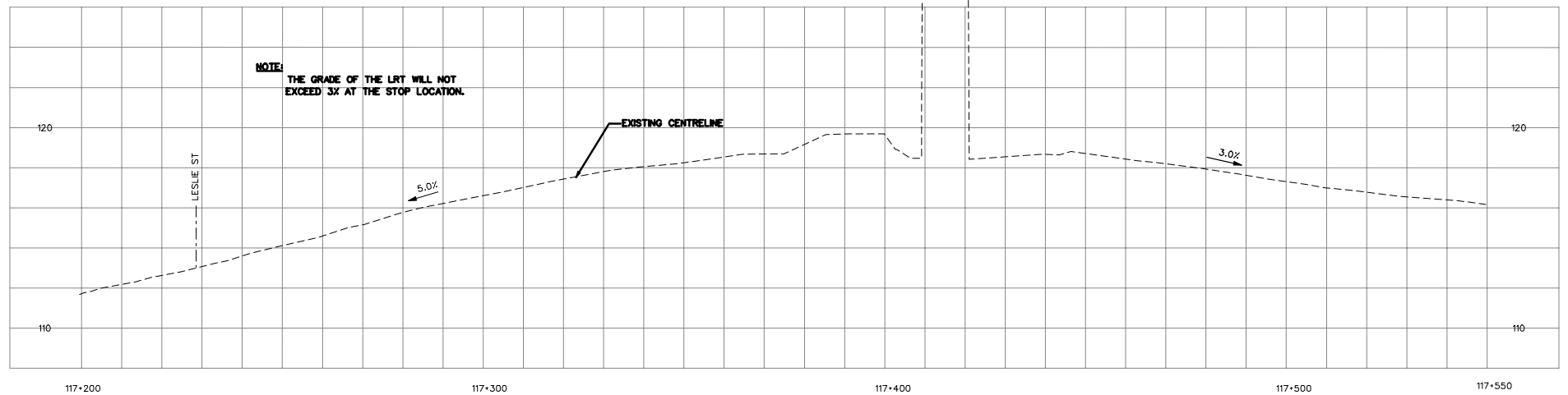
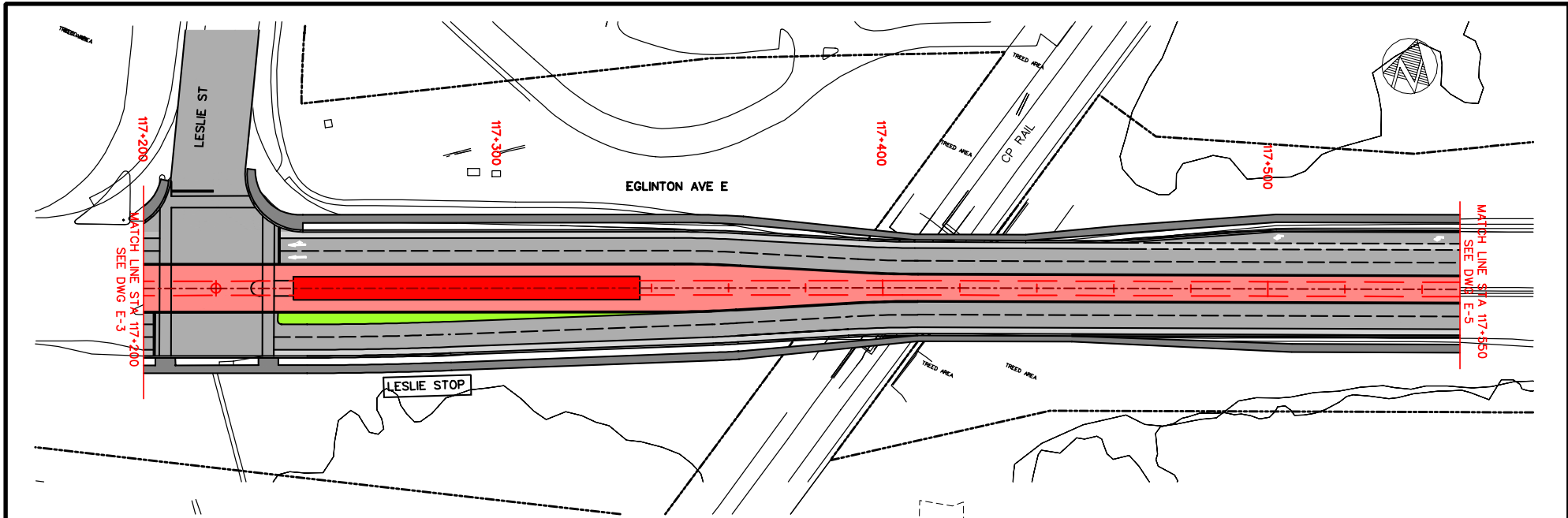


EGLINTON CROSSTOWN LRT - ENVIRONMENTAL PROJECT REPORT

EAST SURFACE SECTION  
 PLAN AND PROFILE STA 116+850 TO STA 117+200



Dep. No.  
E3R  
Sheet No.  
69



NOTE: THE GRADE OF THE LRT WILL NOT EXCEED 3% AT THE STOP LOCATION.

EXISTING CENTRELINE

5.0%

3.0%

117+200

117+300

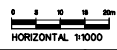
117+400

117+500

117+550

LESLIE ST

LESLIE STOP

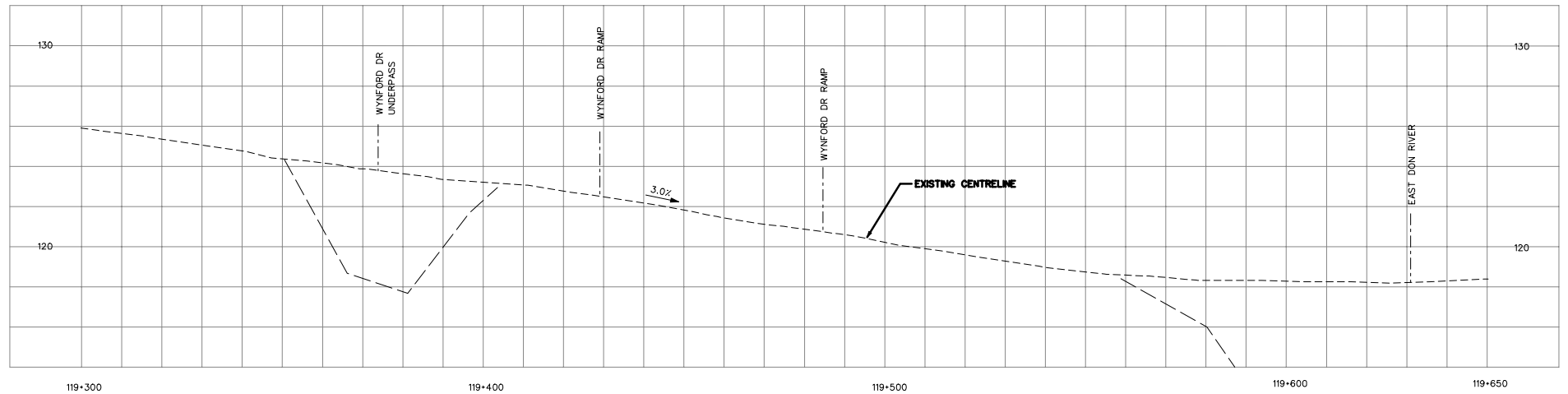
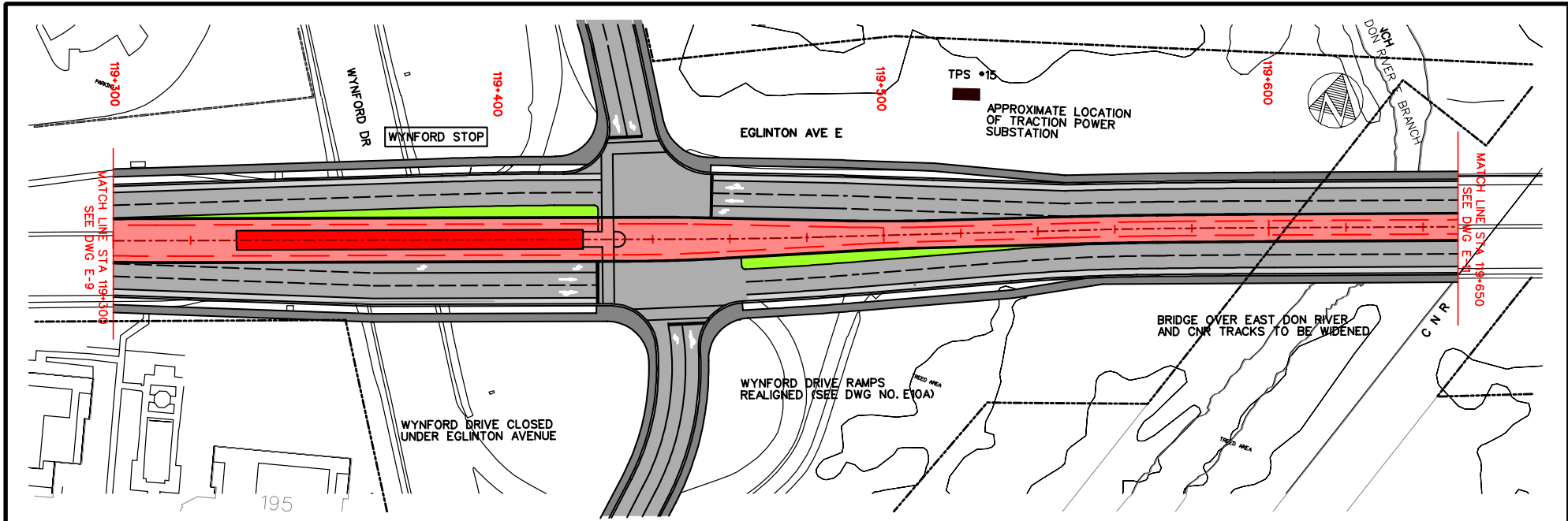


EGLINTON CROSTOWN LRT - ENVIRONMENTAL PROJECT REPORT

EAST SURFACE SECTION  
PLAN AND PROFILE STA 117+200 TO STA 117+550



Dep. No.  
E4R  
Sheet No.  
70

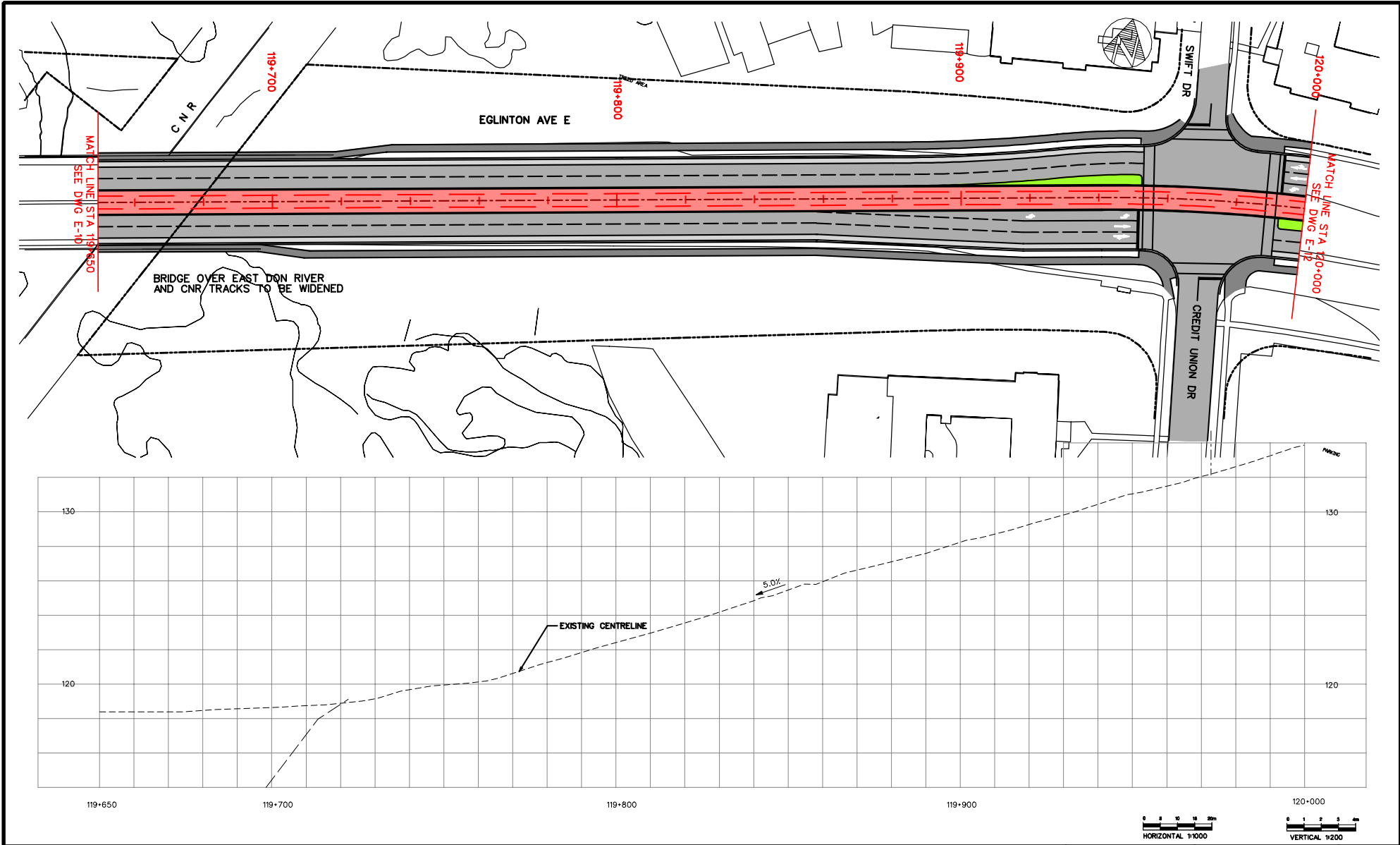


EGLINTON CROSSTOWN LRT - ENVIRONMENTAL PROJECT REPORT

EAST SURFACE SECTION  
PLAN AND PROFILE STA 119+300 TO STA 119+650

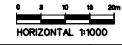


Dep. No.  
E10R  
Sheet No.  
76



EGLINTON CROSSTOWN LRT - ENVIRONMENTAL PROJECT REPORT

EAST SURFACE SECTION  
 PLAN AND PROFILE STA 119+650 TO STA 120+000



Dep. No.  
E11R  
Sheet No.  
77