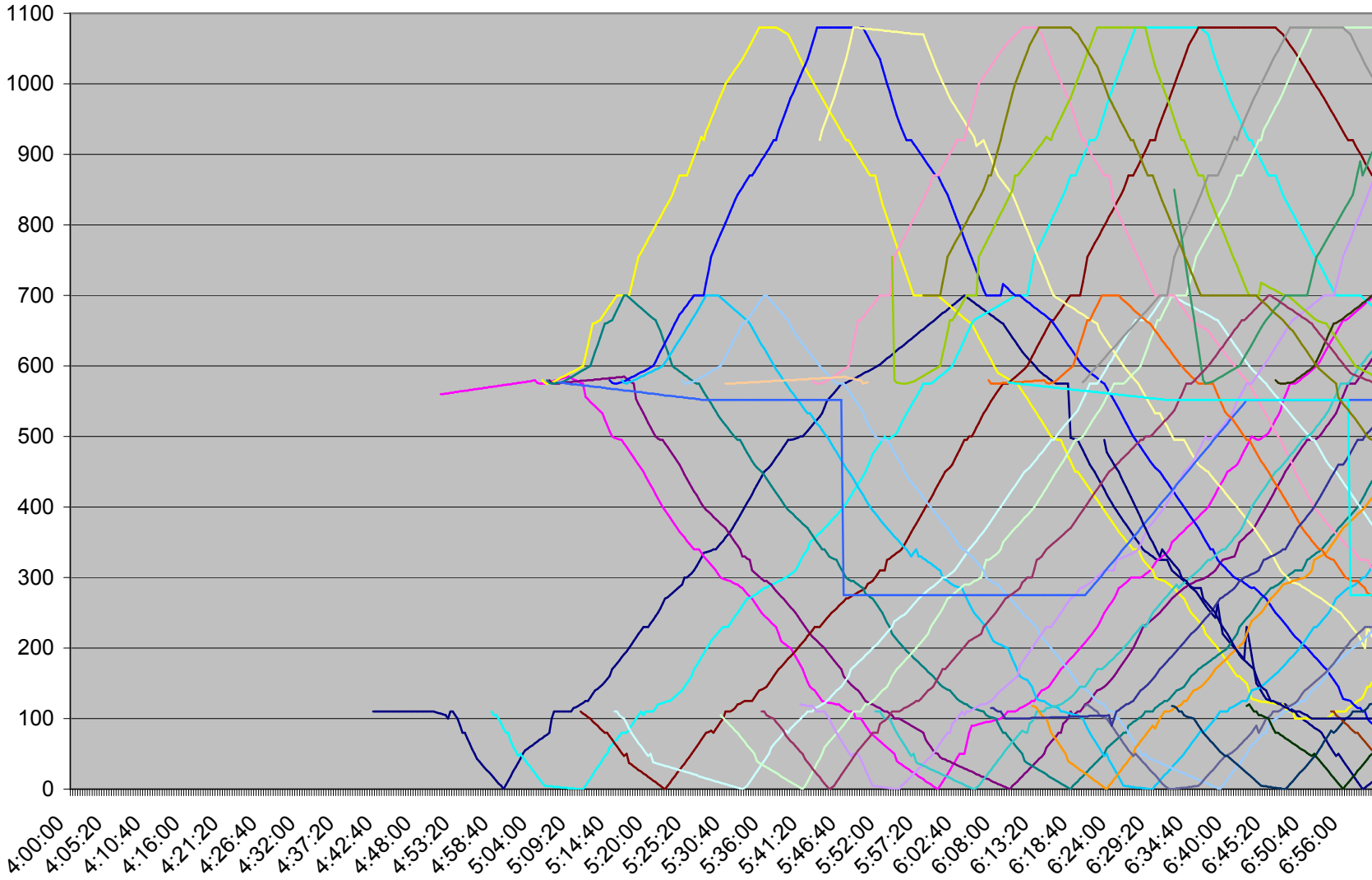


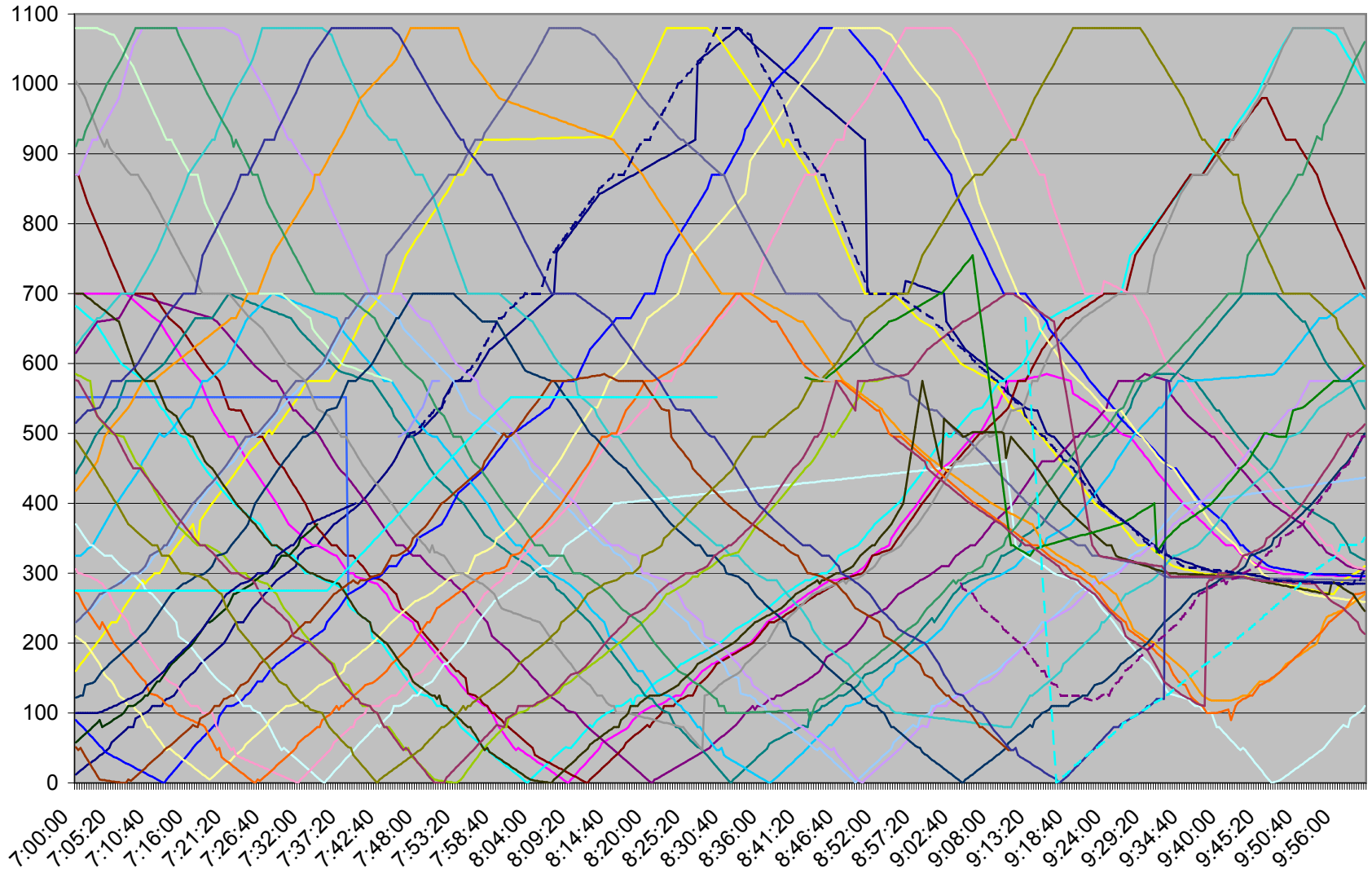
QUEEN Friday 1 Dec 2006

0=Neville 100=Kingston Rd. 200=Broadview 300=Yonge 400=Bathurst 500=Dufferin
575=Roncesvalles 700=Humber 980=Kipling 1080=Long Branch



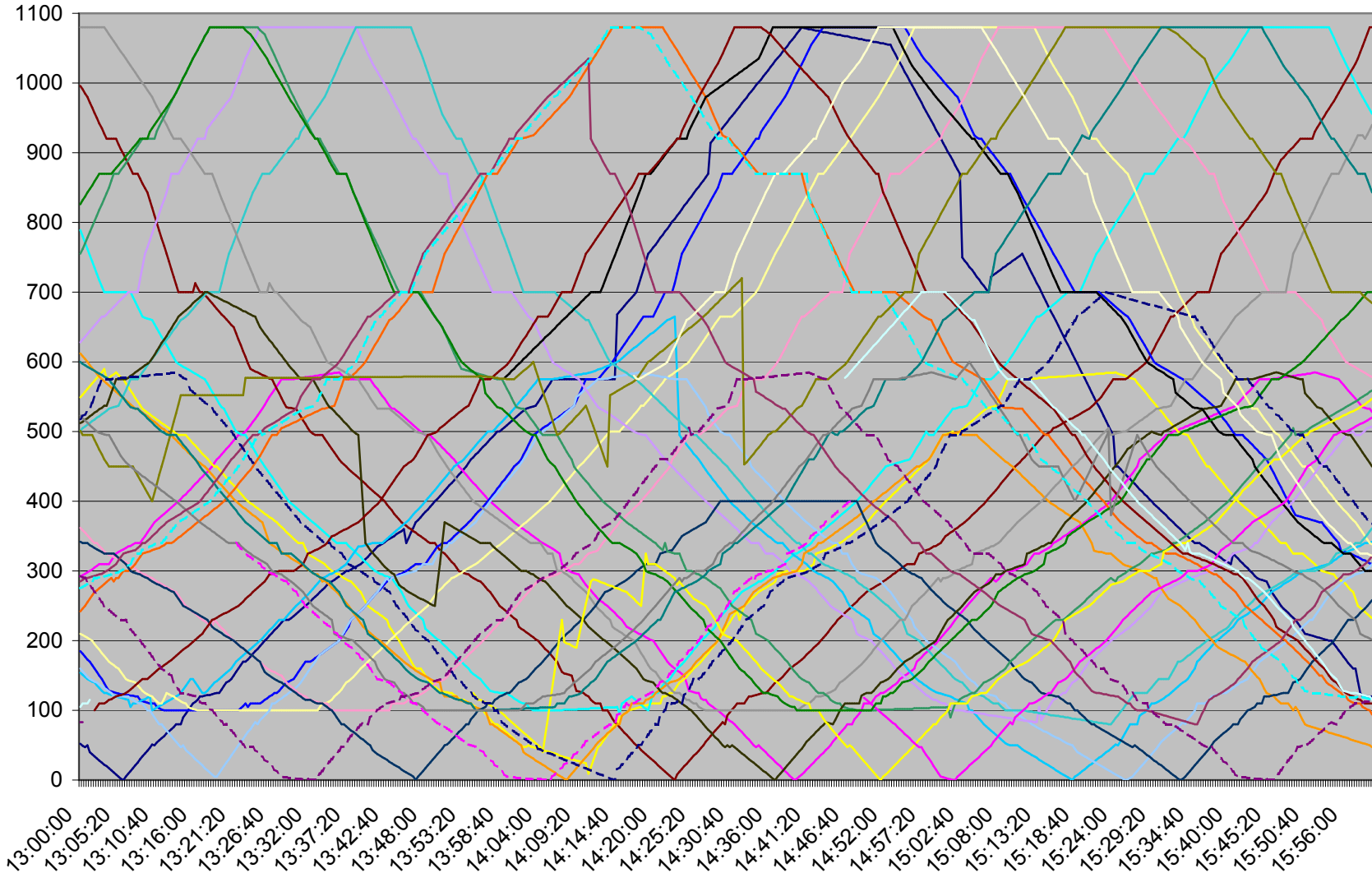
QUEEN Friday 1 Dec 2006

0=Neville 100=Kingston Rd. 200=Broadview 300=Yonge 400=Bathurst 500=Dufferin
575=Roncesvalles 700=Humber 980=Kipling 1080=Long Branch



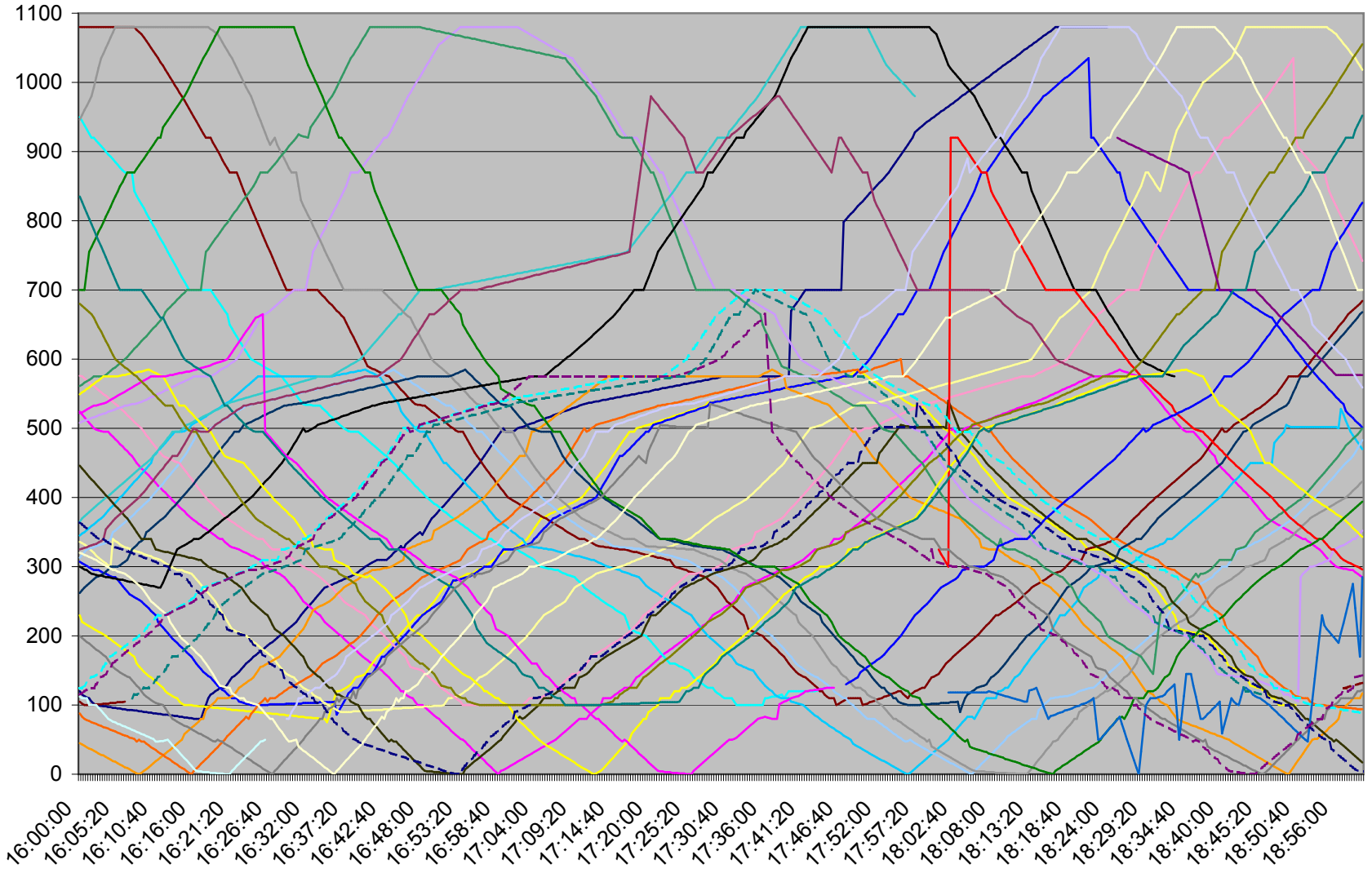
QUEEN Friday 1 Dec 2006

0=Neville 100=Kingston Rd. 200=Broadview 300=Yonge 400=Bathurst 500=Dufferin
575=Roncesvalles 700=Humber 980=Kipling 1080=Long Branch



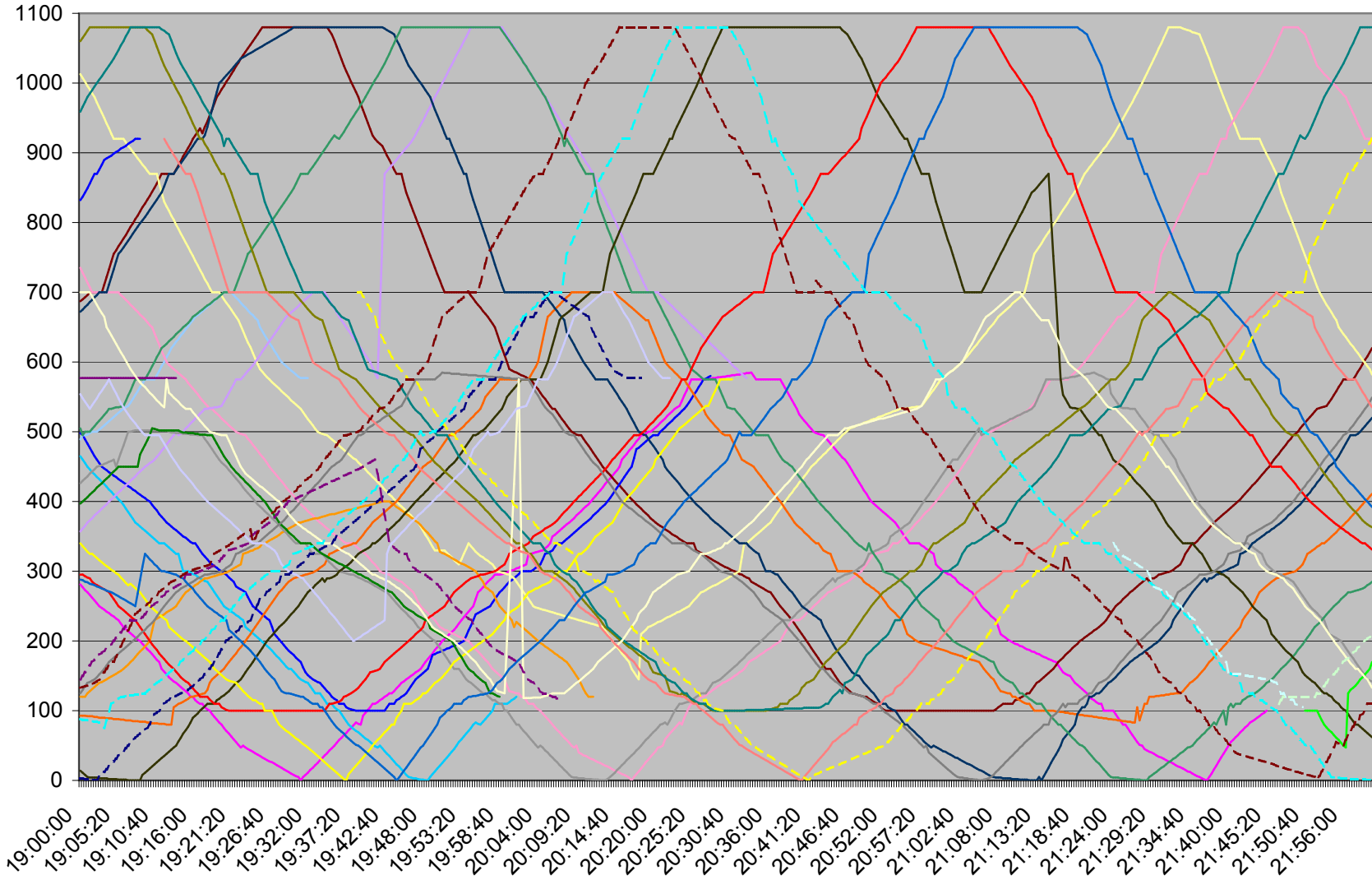
QUEEN Friday 1 Dec 2006

0=Neville 100=Kingston Rd. 200=Broadview 300=Yonge 400=Bathurst 500=Dufferin
575=Roncesvalles 700=Humber 980=Kipling 1080=Long Branch



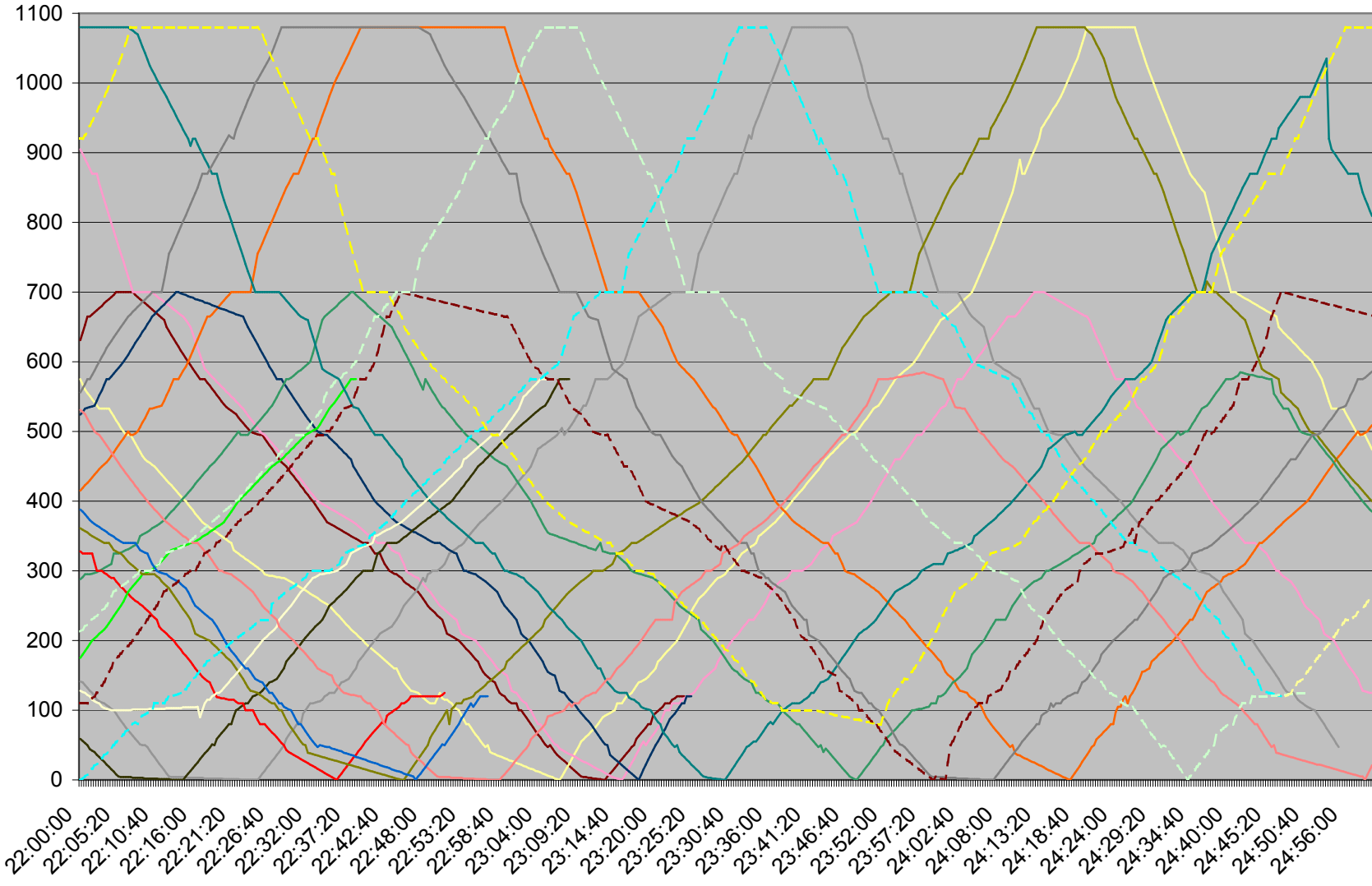
QUEEN Friday 1 Dec 2006

0=Neville 100=Kingston Rd. 200=Broadview 300=Yonge 400=Bathurst 500=Dufferin
575=Roncesvalles 700=Humber 980=Kipling 1080=Long Branch



QUEEN Friday 1 Dec 2006

0=Neville 100=Kingston Rd. 200=Broadview 300=Yonge 400=Bathurst 500=Dufferin
575=Roncesvalles 700=Humber 980=Kipling 1080=Long Branch



QUEEN Friday 1 Dec 2006

0=Neville 100=Kingston Rd. 200=Broadview 300=Yonge 400=Bathurst 500=Dufferin
 575=Roncesvalles 700=Humber 980=Kipling 1080=Long Branch

